



# Abandoned Mine Land Pilot Program

# Agenda

- Introductions
- Program overview
- Eligibility
- Application process
- Project implementation
- Questions

# Overview

- Federally-funded program with a goal of reclaiming eligible pre-1977 mined lands for the purpose of long-term economic and community development
- Administered by the Ohio Division of Mineral Resource Management (DMRM)
- Funded through annual grants from the US Department of the Interior Office of Surface Mining and Reclamation and Enforcement (OSMRE)
- Reclaims hazards such as subsidence, mine fires, hazardous mine openings, acid mine drainage and dangerous highwalls
- Demonstrates economic and community development impact as communities return sites to productive reuse

# What sites are eligible?

Unreclaimed Priority 1 and Priority 2 sites:

- Clogged Stream
- Clogged Stream Lands
- Dangerous Pile or Embankment
- Dangerous Highwall
- Dangerous Impoundment
- Dangerous Slide
- Hazardous or Explosive Gases
- Hazardous Equipment or Facilities
- Hazardous Recreational Water Body
- Industrial or Residential Waste
- Portal
- Polluted Water: Agricultural/Industrial
- Polluted Water: Human Consumption
- Subsidence
- Surface Burning
- Underground Mine Fire
- Vertical Opening



Descriptions available at [www.osmre.gov/programs/AMLIS/priority1\\_2.shtm](http://www.osmre.gov/programs/AMLIS/priority1_2.shtm)

# Eligible sites:

## Unreclaimed Priority 3 sites:

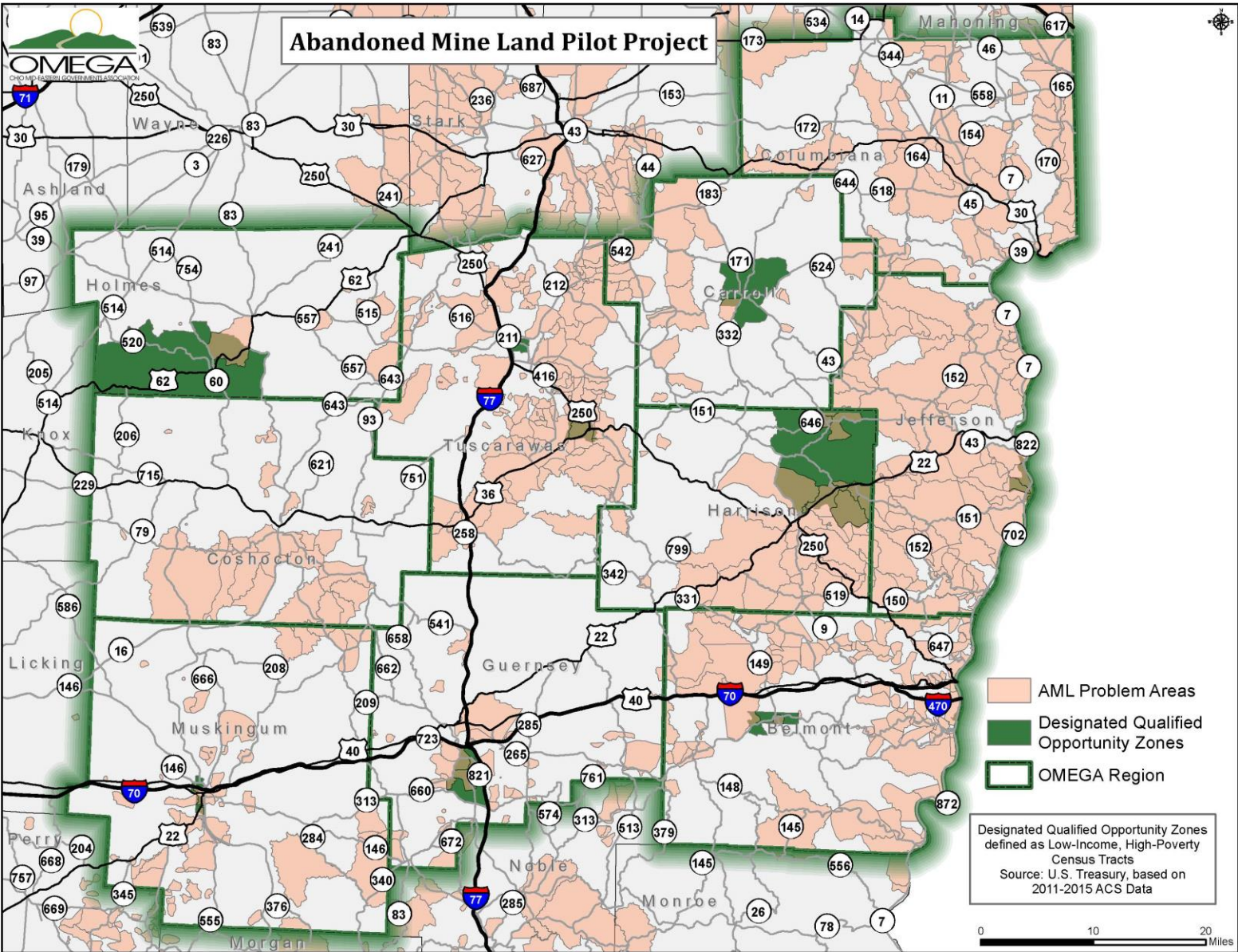
- **Bench, Solid Bench, Fill Bench**
- **Industrial or Residential Waste Dump**
- **Equipment and Facilities**
- **Gob**
- **Highwall**
- **Haul Road**
- **Mine Opening**
- **Pit, Open Pit, Strip Pit**
- **Spoil, Spoil Bank**
- **Slurry**
- **Slump**
- **Water**
- **Other**

**Descriptions available at [www.osmre.gov/programs/AMLIS/priority3.shtm](http://www.osmre.gov/programs/AMLIS/priority3.shtm)**

# Also eligible:

- Previously reclaimed AML lands and polluted waters
- Land adjacent to unreclaimed or previously reclaimed AML lands and polluted waters as justified by the state AML program and/or communities impacted by historical coal production.





# Project categories:

- **Category A: Reclamation with Development**

Includes economic and community development related activity as part of the project, in addition to reclamation activities, and results in positive measurable economic and community development outcomes.

- **Category B: Reclamation for Potential Development**

Creates favorable conditions for economic development or promotes the general welfare through economic and community development.



# Funds Available

- Total Program Funds Available: \$10 Million
- No maximum project amount
- Use of Funds: Construction Only\*
- **No match required:** *Applicants encouraged to identify and leverage other funding sources for separate project phases*

*\*DMRM will design, bid and manage construction of remediation activities.*

# I think I have a site. Now what?

- Contact OMEGA for a preliminary project review
- If site selection criteria is met, OMEGA will schedule a meeting with appropriate DMRM staff
- If DMRM staff determines project criteria is met, OMEGA will work with the applicant to develop and submit an application.
- DMRM will submit approved applications to the federal Office of Surface Mining for final eligibility determination
- Following project eligibility determination by the Office of Surface Mining, DMRM will determine which projects are funded and implemented

# Project implementation

- DMRM staff will design, bid and manage the project's construction phase
- Local applicant will track and report economic and/or community development outcomes such as:
  - Jobs Created
  - Businesses Created, Served or Improved
  - Other Capital Investments
  - Communities Served or Improved
  - Number of Beneficiaries (site visitors or users)

**To schedule a site review, contact Lisa  
Duvall**

**740.439.4471, Ext. 205**

**[lduvall@omegadistrict.org](mailto:lduvall@omegadistrict.org)**