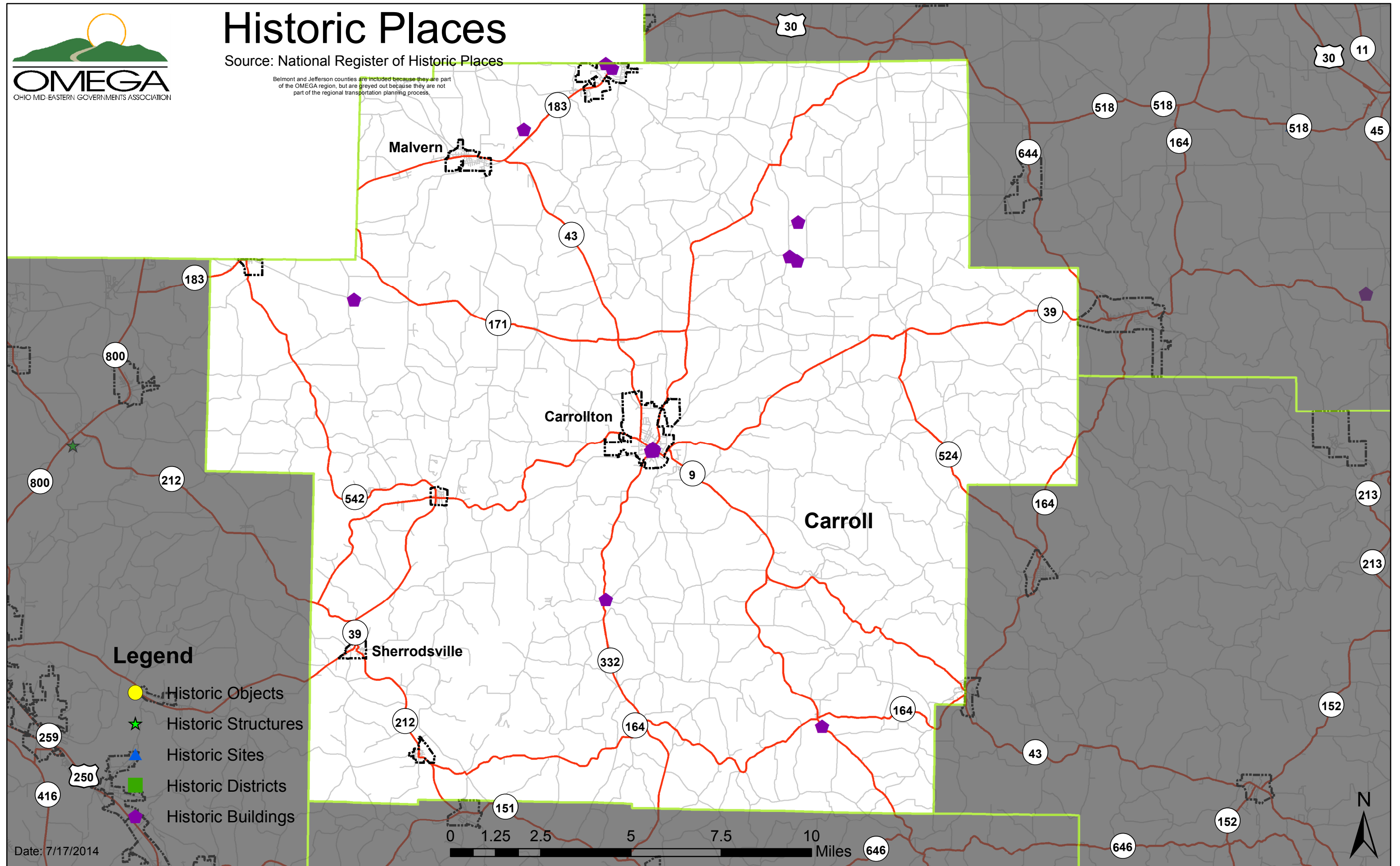




Historic Places

Source: National Register of Historic Places

Belmont and Jefferson counties are included because they are part of the OMEGA region, but are greyed out because they are not part of the regional transportation planning process.



Legend

- Historic Objects
- ★ Historic Structures
- ▲ Historic Sites
- Historic Districts
- Historic Buildings

Date: 7/17/2014

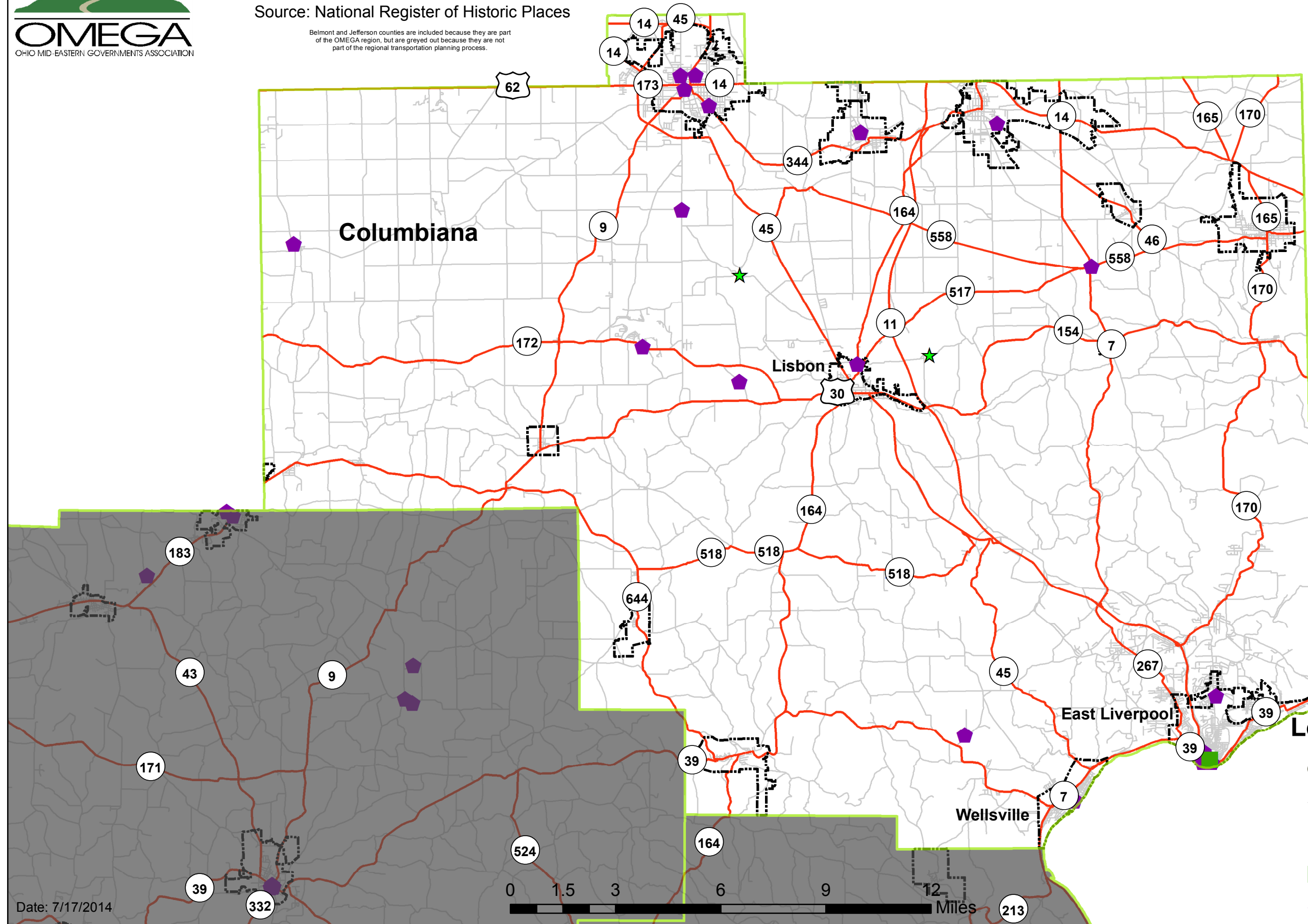
0 1.25 2.5 5 7.5 10 Miles



Historic Places

Source: National Register of Historic Places

Belmont and Jefferson counties are included because they are part of the OMEGA region, but are greyed out because they are not part of the regional transportation planning process.



Legend

- Historic Objects
- ★ Historic Structures
- ▲ Historic Sites
- Historic Districts
- ◆ Historic Buildings

Date: 7/17/2014



Historic Places

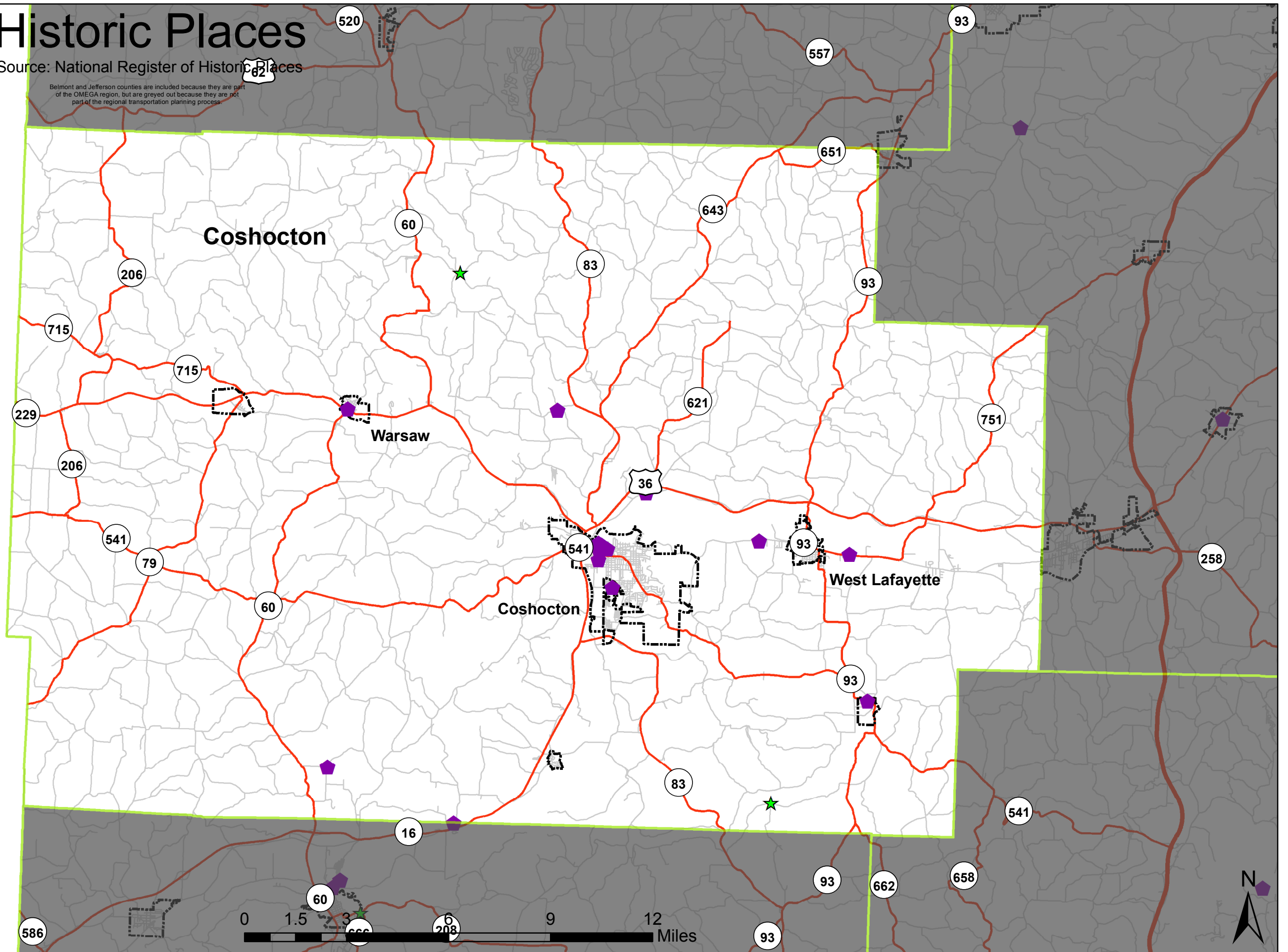
Source: National Register of Historic Places

Belmont and Jefferson counties are included because they are part of the OMEGA region, but are greyed out because they are not part of the regional transportation planning process.

Legend

- Historic Objects
- Historic Structures
- Historic Sites
- Historic Districts
- Historic Buildings

Date: 7/17/2014

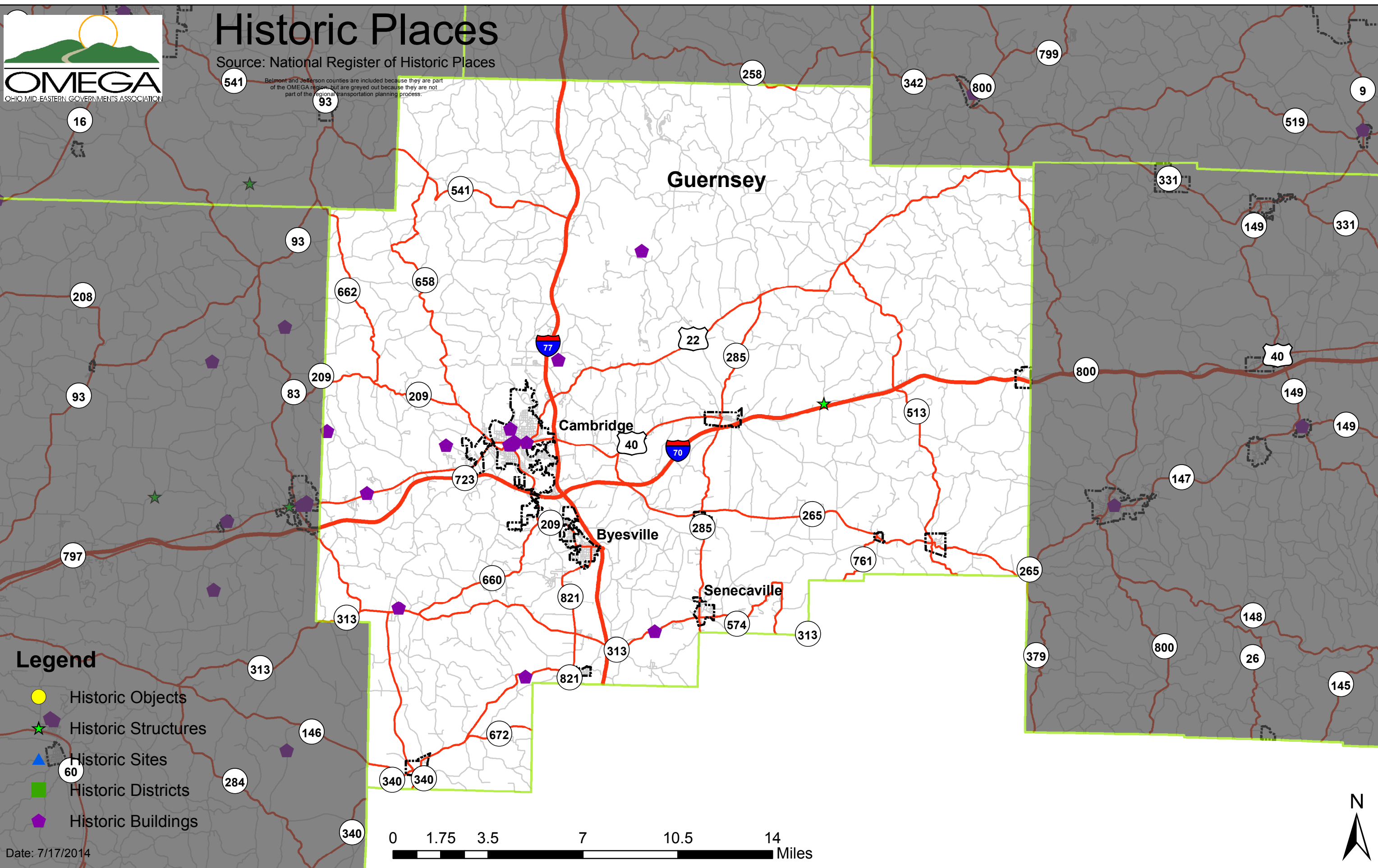




Historic Places

Source: National Register of Historic Places

Belmont and Jefferson counties are included because they are part of the OMEGA region, but are greyed out because they are not part of the regional transportation planning process.



Legend

- Historic Objects
- Historic Structures
- Historic Sites
- Historic Districts
- Historic Buildings

Date: 7/17/2014

0 1.75 3.5 7 10.5 14 Miles





Historic Places

Source: National Register of Historic Places

Belmont and Jefferson counties are included because they are part of the OMEGA region, but are greyed out because they are not part of the regional transportation planning process.

Harrison

Hopedale

Cadiz

Freeport

Legend

- Historic Objects
- ★ Historic Structures
- ▲ Historic Sites
- Historic Districts
- ◆ Historic Buildings

Date: 7/17/2014

0 1.25 2.5 5 7.5 10 Miles





Historic Places

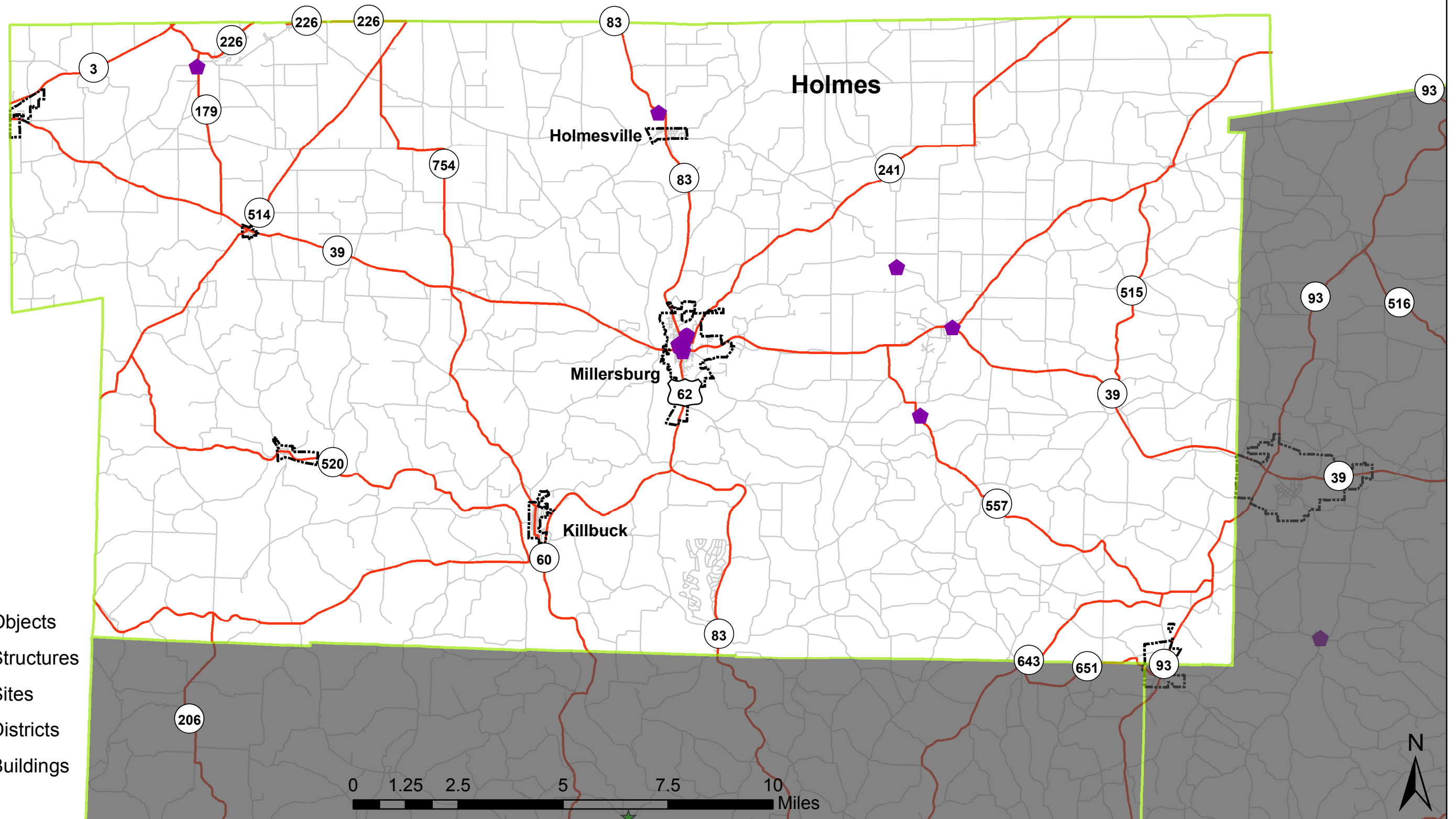
Source: National Register of Historic Places

Belmont and Jefferson counties are included because they are part of the OMEGA region, but are greyed out because they are not part of the regional transportation planning process.

Legend

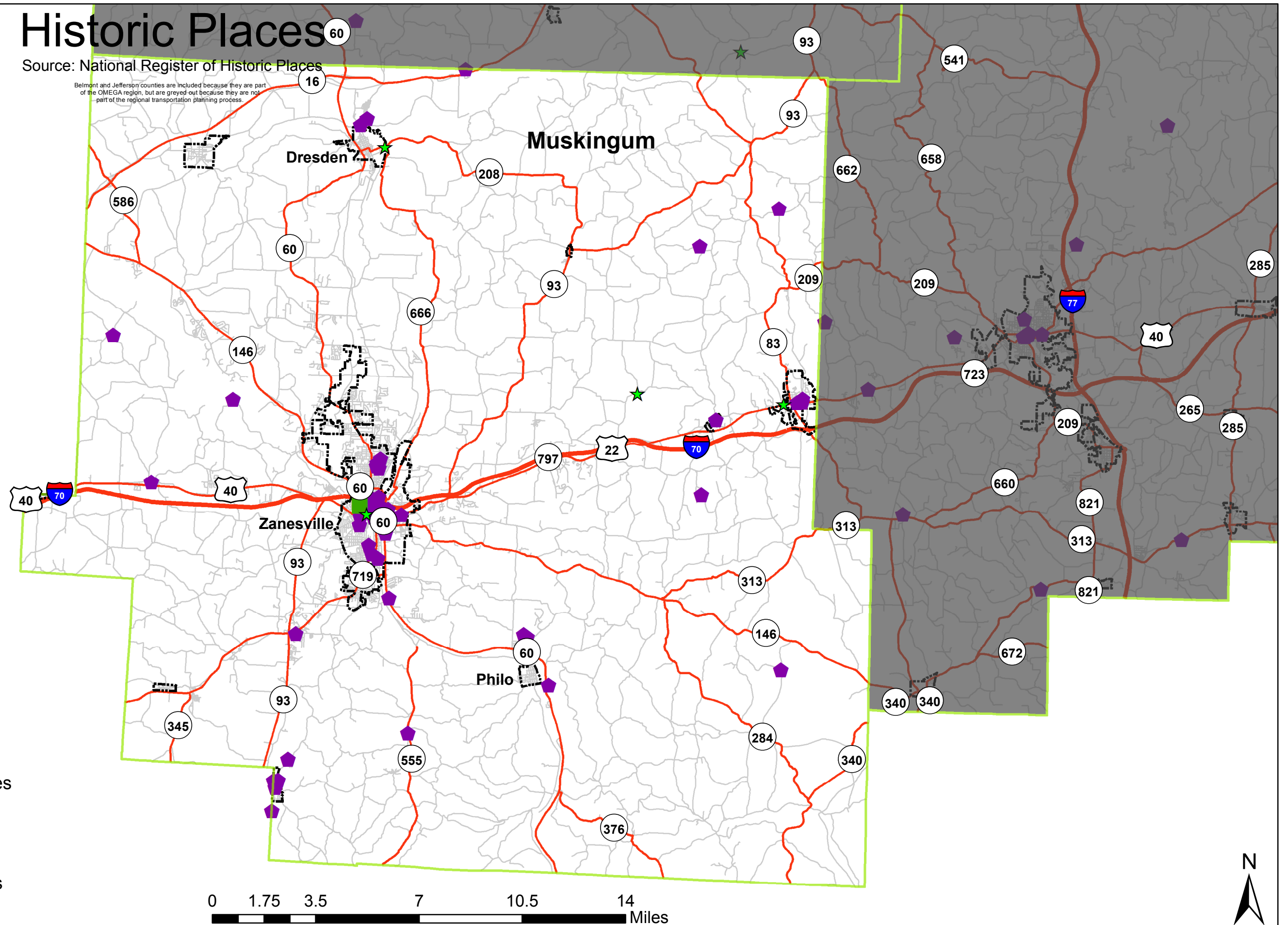
- Historic Objects
- ★ Historic Structures
- ▲ Historic Sites
- Historic Districts
- ◆ Historic Buildings

Date: 7/17/2014



Source: National Register of Historic Places

Belmont and Jefferson counties are included because they are part of the OMEGA region, but are greyed out because they are not part of the regional transportation planning process.



Legend

-  Historic Objects
-  Historic Structures
-  Historic Sites
-  Historic Districts
-  Historic Buildings

Date: 7/17/2014

A horizontal scale bar with tick marks at 0, 1.75, 3.5, 7, 10.5, and 14. The word "Miles" is at the right end.





Historic Places

Source: National Register of Historic Places

Belmont and Jefferson counties are included because they are part of the OMEGA region, but are greyed out because they are not part of the regional transportation planning process.

