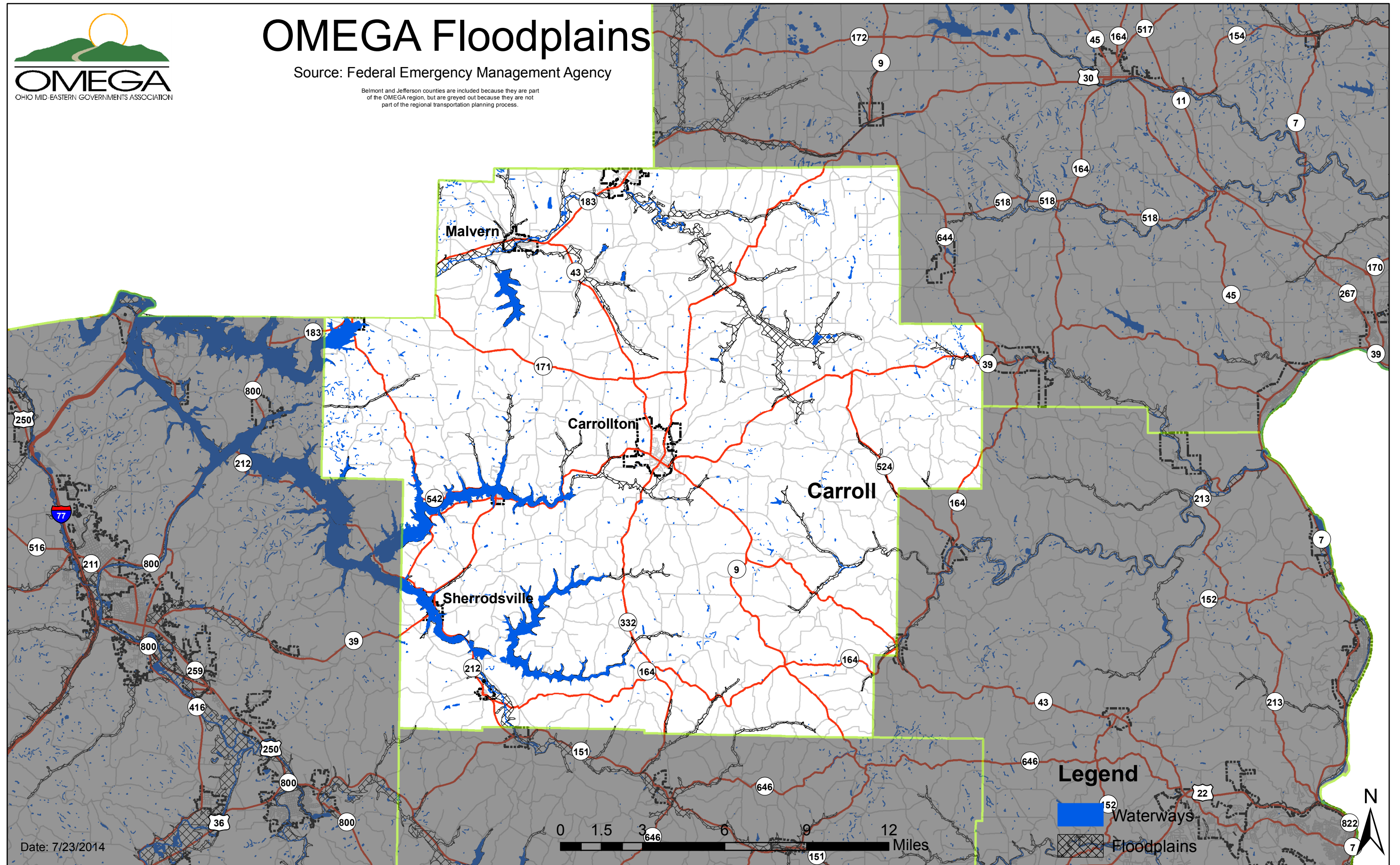




OMEGA Floodplains

Source: Federal Emergency Management Agency

Belmont and Jefferson counties are included because they are part of the OMEGA region, but are greyed out because they are not part of the regional transportation planning process.



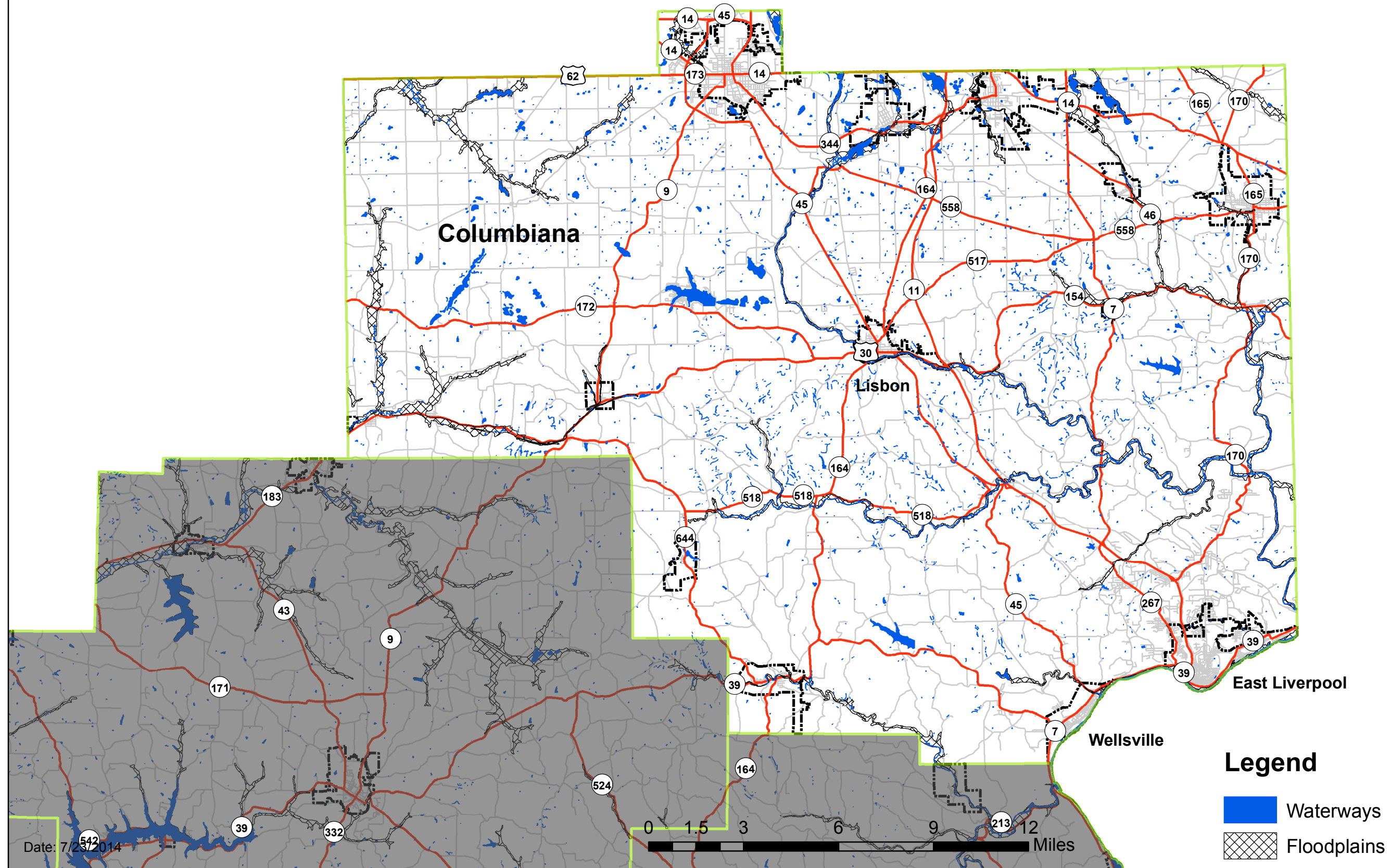
Date: 7/23/2014



OMEGA Floodplains

Source: Federal Emergency Management Agency

Belmont and Jefferson counties are included because they are part of the OMEGA region, but are greyed out because they are not part of the regional transportation planning process.

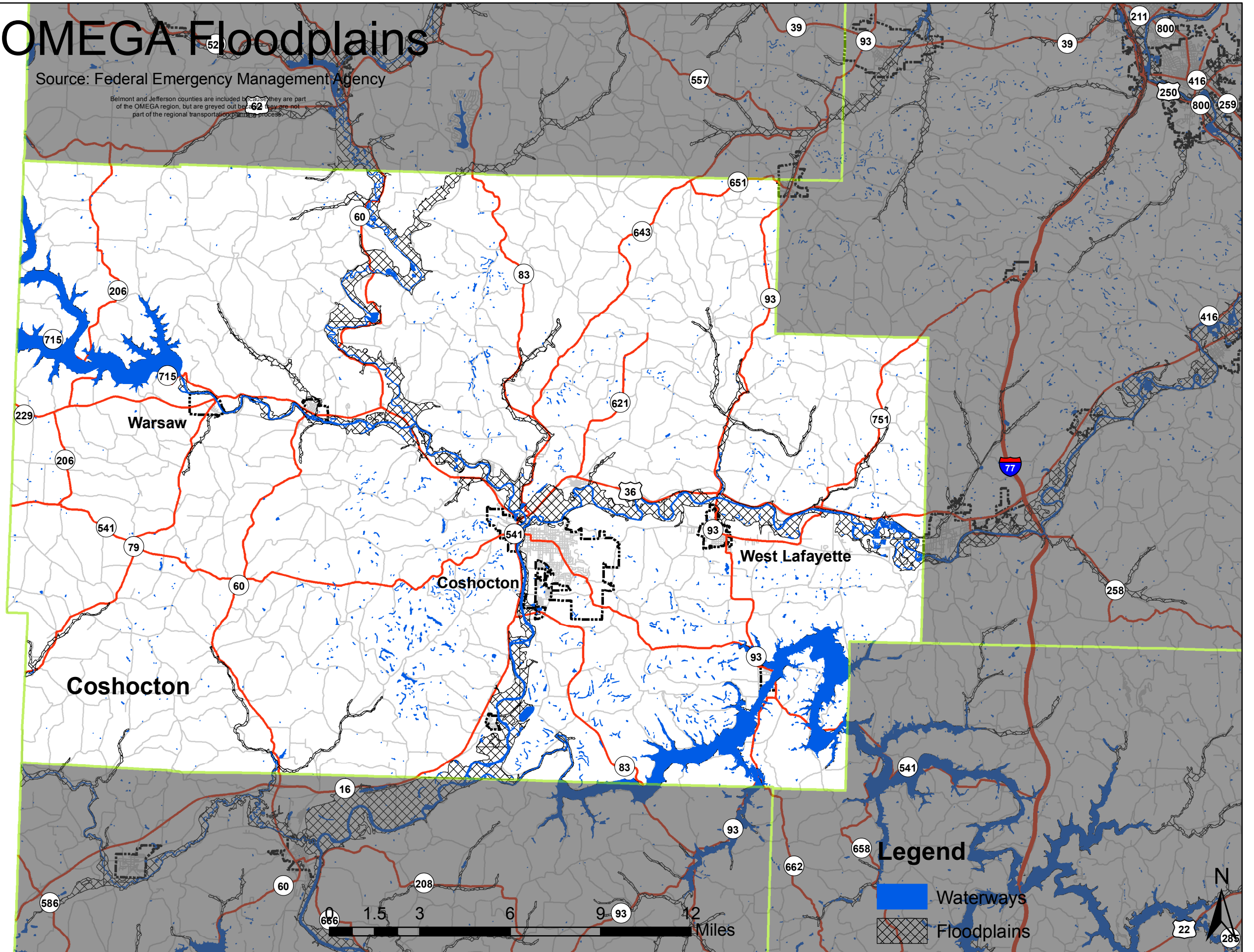




OMEGA Floodplains

Source: Federal Emergency Management Agency

Belmont and Jefferson counties are included because they are part of the OMEGA region, but are greyed out because they are not part of the regional transportation planning process.



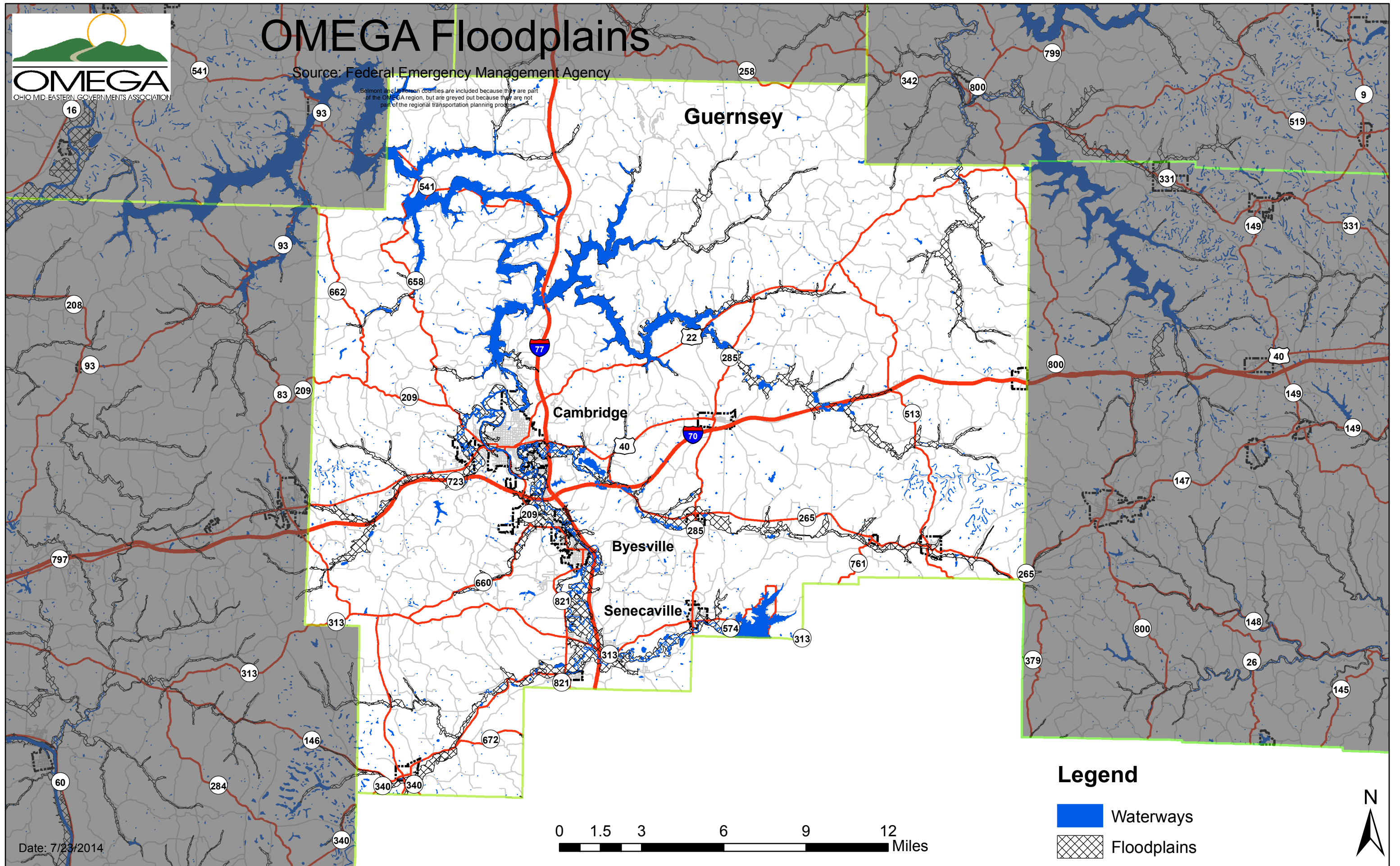
Date: 7/23/2014



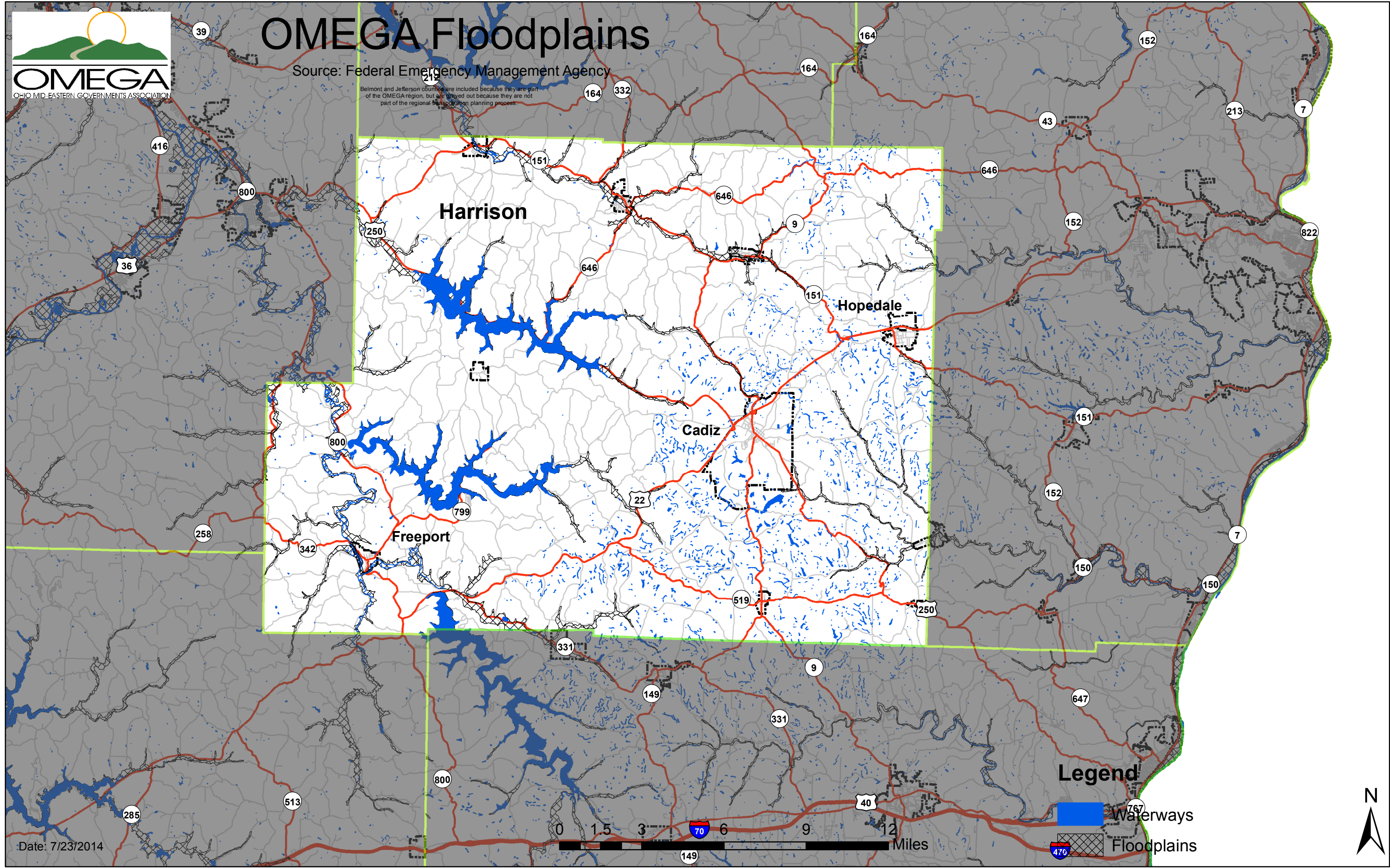
OMEGA Floodplains

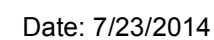
Source: Federal Emergency Management Agency

Belmont and Jefferson counties are included because they are part of the OMEGA region, but are greyed out because they are not part of the regional transportation planning process.



Date: 7/23/2014



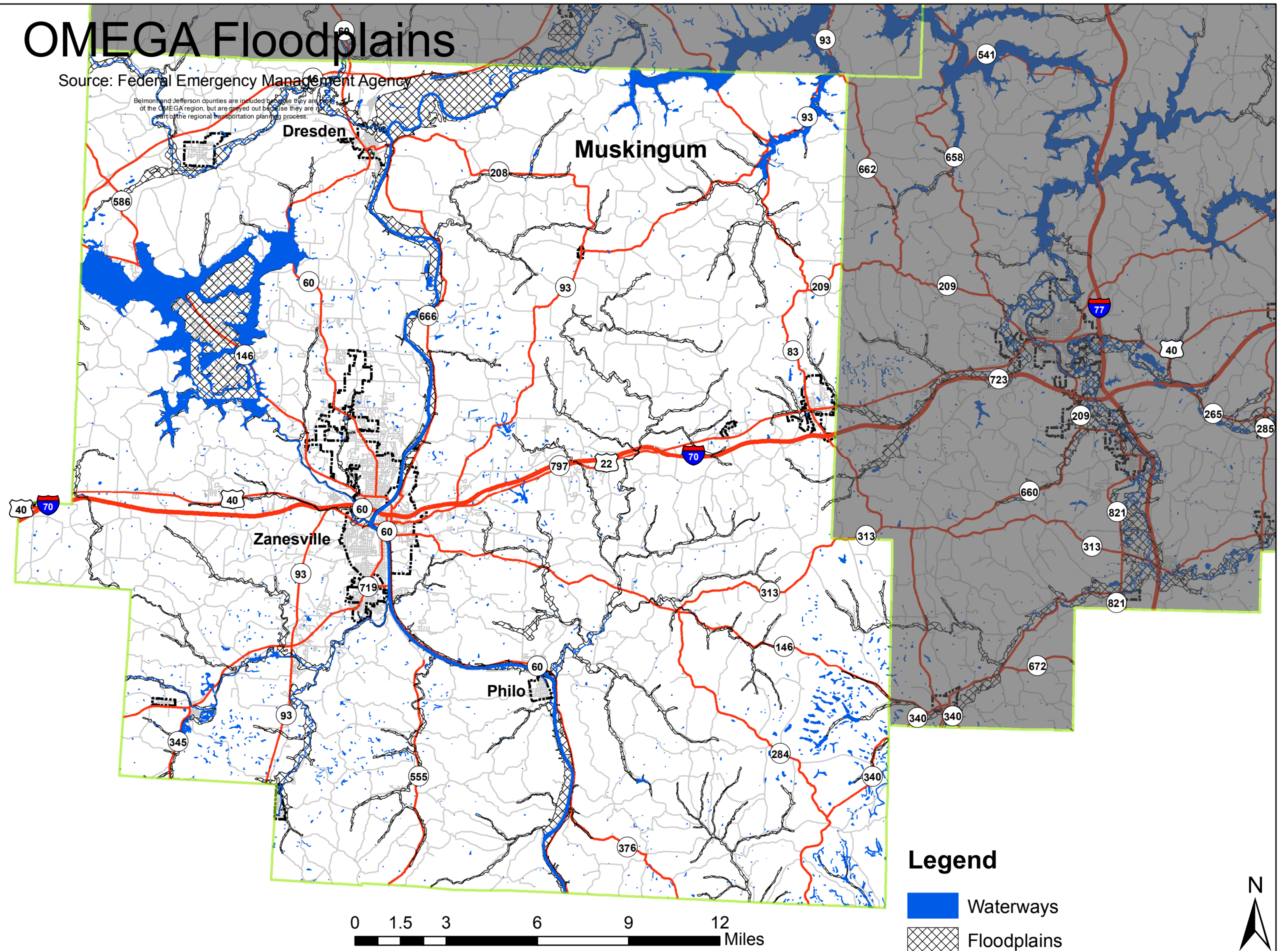




OMEGA Floodplains

Source: Federal Emergency Management Agency

Belmont and Jefferson counties are included because they are part of the OMEGA region, but are greyed out because they are not part of the regional transportation planning process.





OMEGA Floodplains

Source: Federal Emergency Management Agency

Belmont and Jefferson counties are included because they are part of the OMEGA region, but are greyed out because they are not part of the regional transportation planning process.

