

Section 3.8 Rail

As shown in Figure 3-30, the OMEGA RTPPO region is served by ten different rail companies which operate 1,261 miles of railroads. The largest of these companies is Norfolk Southern. The whole Norfolk Southern System covers approximately 21,000 route miles, of which 2,233 miles are located in Ohio. As shown in Table 3-9, the Norfolk Southern rail line in the OMEGA RTPPO region covers 289 route miles and runs the length of the Ohio River connecting all of the ports in the region. The Wheeling Lake Erie Railroad is a regional railroad and is the largest railroad in the OMEGA boundary that is based in Ohio. The line connects the manufacturing and ports on Lake Erie to the ports on the Ohio River, creating a vital link in shipping.

Table 3-9: Rail Summary

Railroad Owner	Abbreviation	Miles	
		Total	Percent
Central Columbiana and Pennsylvania Railway	CCPR	21.13	1.68%
Columbus and Ohio River Railroad	CUOH	174.70	13.85%
Norfolk Southern	NS	288.69	22.89%
Ohio Central Railroad*	OHCR	197.17	15.64%
Ohio-Rail Corporation	OHIC	108.92	8.64%
Ohio Rail Development Commission	ORDC	26.25	2.08%
Ormet Railroad Corporation	ORMET	14.35	1.14%
Ohio Southern Railroad	OSRR	64.99	5.15%
R.J. Corman Railroad/Cleveland Line	RJCL	111.17	8.82%
Wheeling Lake Erie Railroad	WE	253.58	20.11%
Total		1,260.95	

*Division of Genesee & Wyoming, Inc.

With shale development, access to rail is becoming critical. The processing plants in Harrison County have installed several rail sidings in order to be able to ship products by rail. As shown in Figure 3-30, Harrison County is served by the Columbus and Ohio River Railroad and the Wheeling Lake Erie Railroad. Connectivity of these rail lines to product destinations will be a key component in the viability of shipping product by rail.

Railroad volumes show how much traffic is actually being done on the rail systems. The segment densities are calculated by the Federal Railroad Administration with the scale of 1-7, with 1 being less dense and 7 being the most dense. In general, the railroads throughout the region are fairly open and not congested. As shown in Figure 3-31, the most congested line (rating of 4) in the rail system that serves the OMEGA RTPPO region is a Norfolk Southern line that connects Salem to Cleveland in the North, Pittsburgh in the East and Canton in the West. In the more urbanized areas, the congestion or density level increases to a 3. The rest of the lines in the area have a 1 or 2 level of congestion.

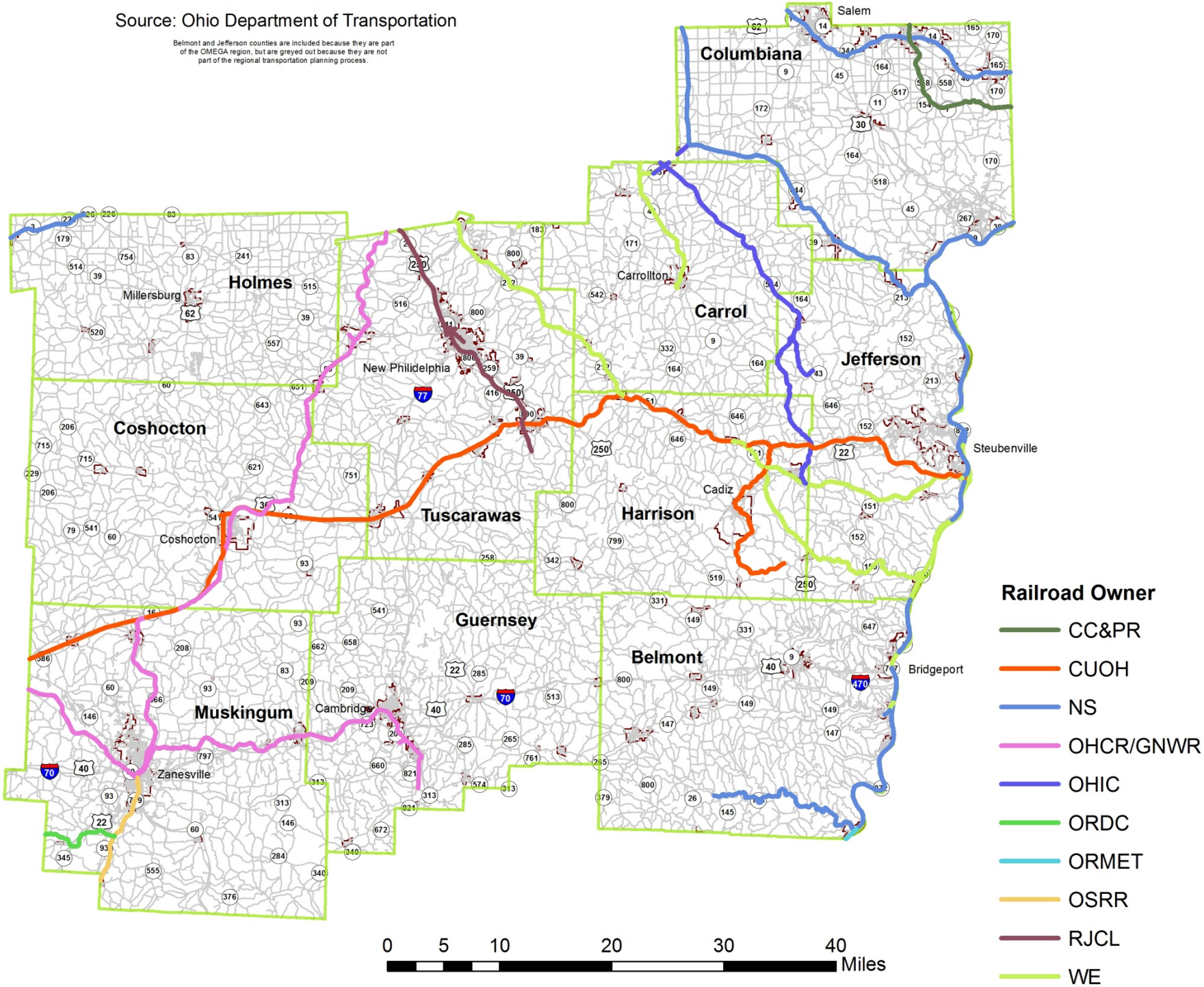
Figure 3-30: OMEGA Railroads Owner



OMEGA Railroads

Source: Ohio Department of Transportation

Belmont and Jefferson counties are included because they are part of the OMEGA region, but are greyed out because they are not part of the regional transportation planning process.



Date: 7/23/2014

Figure 3-31: OMEGA Railroads Freight Volume

