

Connected Nation's mapping program derives the following broadband data through a combination of direct communication with service providers, FCC Form 477 broadband coverage and subscription data, verified public feedback, and independent research conducted by Connected Nation Ohio.

As part of the data collection and verification process, Connected Nation first attempts to request granular broadband coverage data directly from service providers. If the provider is unable or unwilling to provide granular service coverage data for the development of a detailed service area, then the FCC Form 477 data is used. The FCC Form 477 is much broader; providers are only required to submit service coverage data at the census block level. In other words, if one person in a census block has broadband coverage, the provider may report the entire census block as having coverage. This may be problematic in rural areas where census blocks can be very large. For example, in the OMEGA region, census block areas can range from 0.000002 square miles in more developed areas to approximately 6.5 square miles in more rural areas.

Please note, for the general representative nature of these maps, all square mileage calculated is approximate.

Disclaimer: Service availability is based upon best available data and may not reflect actual areas serviced. These maps are not a guarantee of internet service availability.

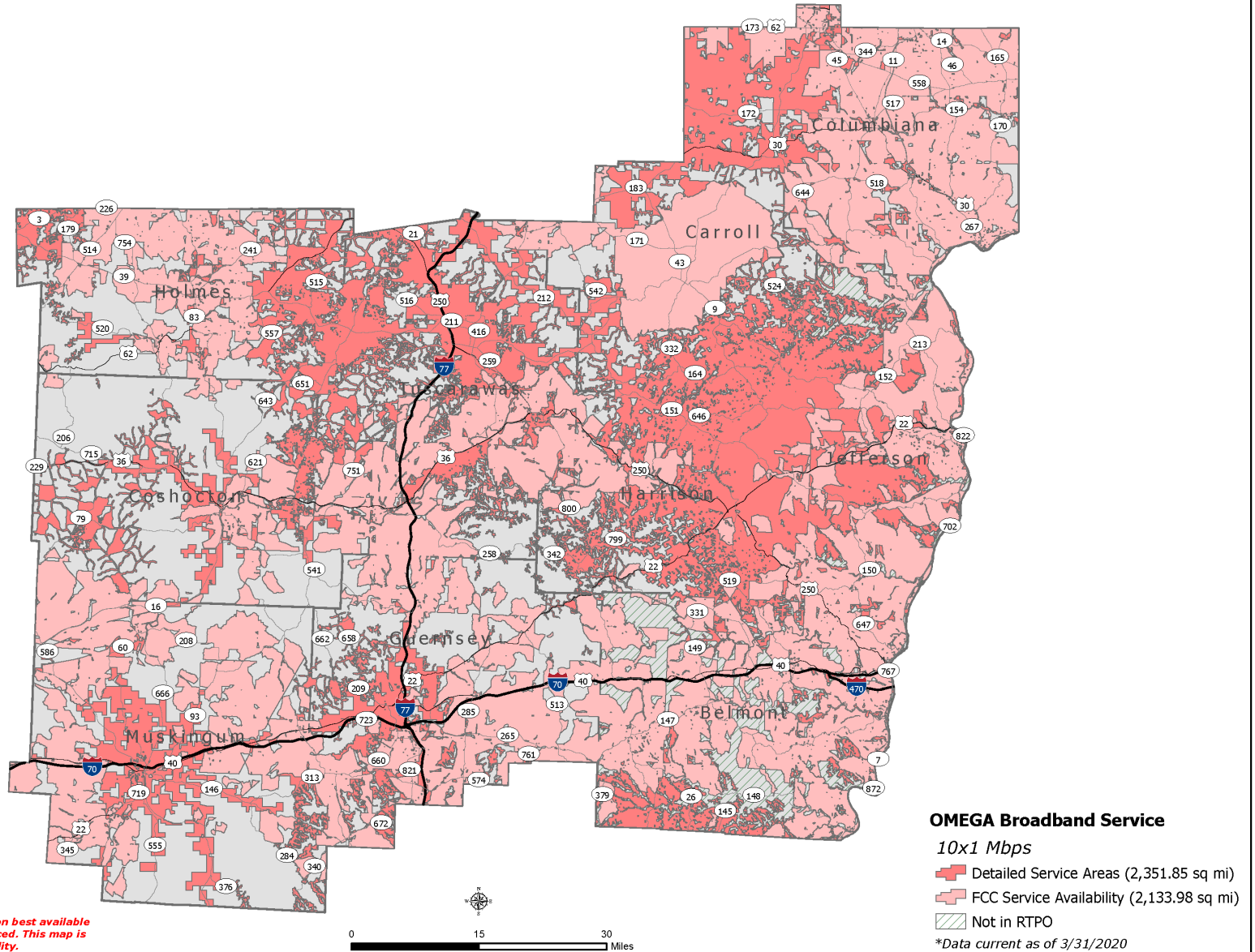
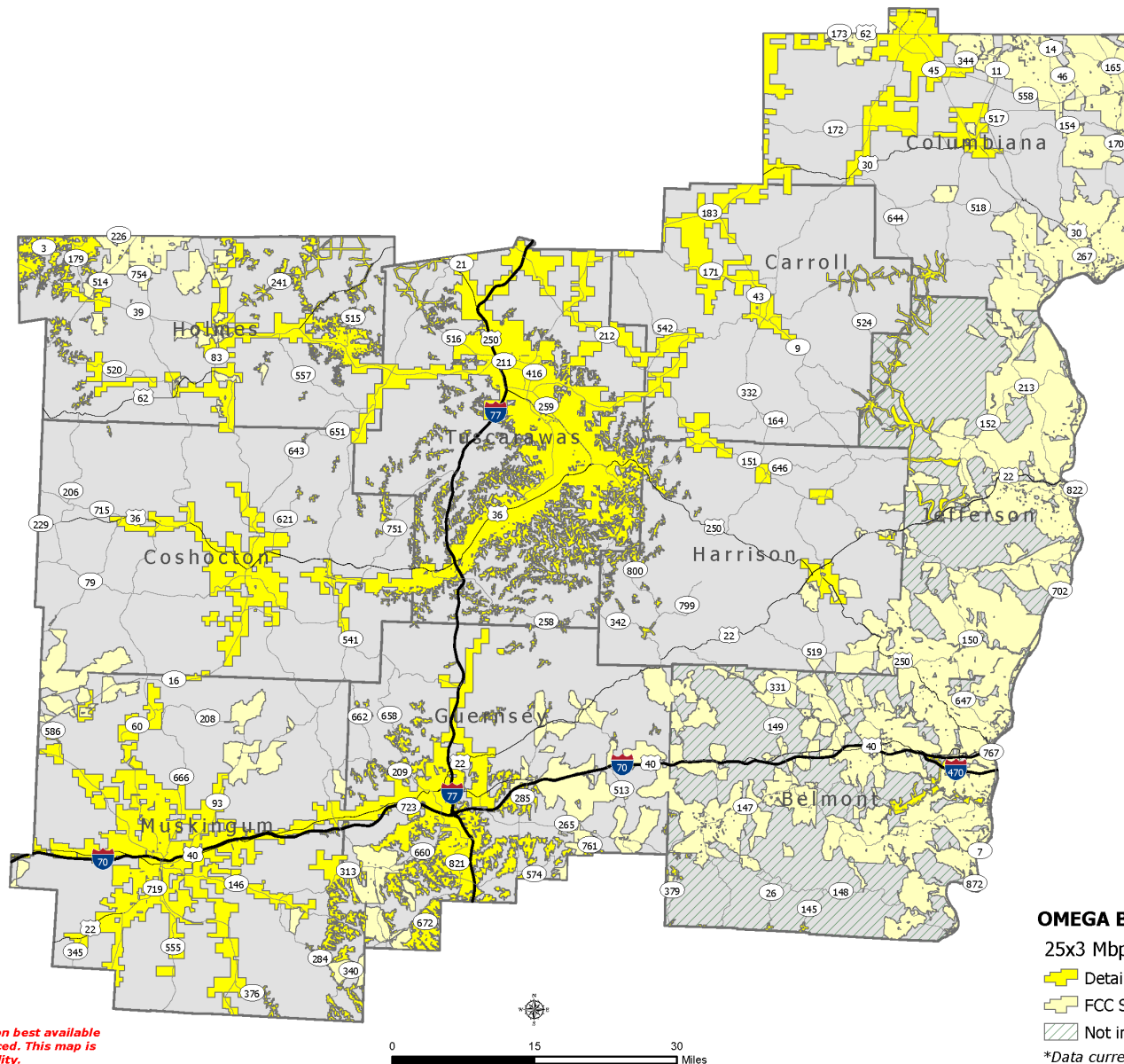


Figure B-1: Broadband Service Coverage – 10 x 1 Mbps

Figure B-1 shows broadband service coverage for the OMEGA region with speeds of 10 Mbps (Megabits per second) download and 1 Mbps upload. Detailed Service Areas (granular) and FCC Service Availability (non-granular) are color-coded separately. This data is provided by Connected Nation, current as of March 31, 2020.



Disclaimer: Service availability is based upon best available data and may not reflect actual areas serviced. This map is not a guarantee of internet service availability.

OMEGA Broadband Service

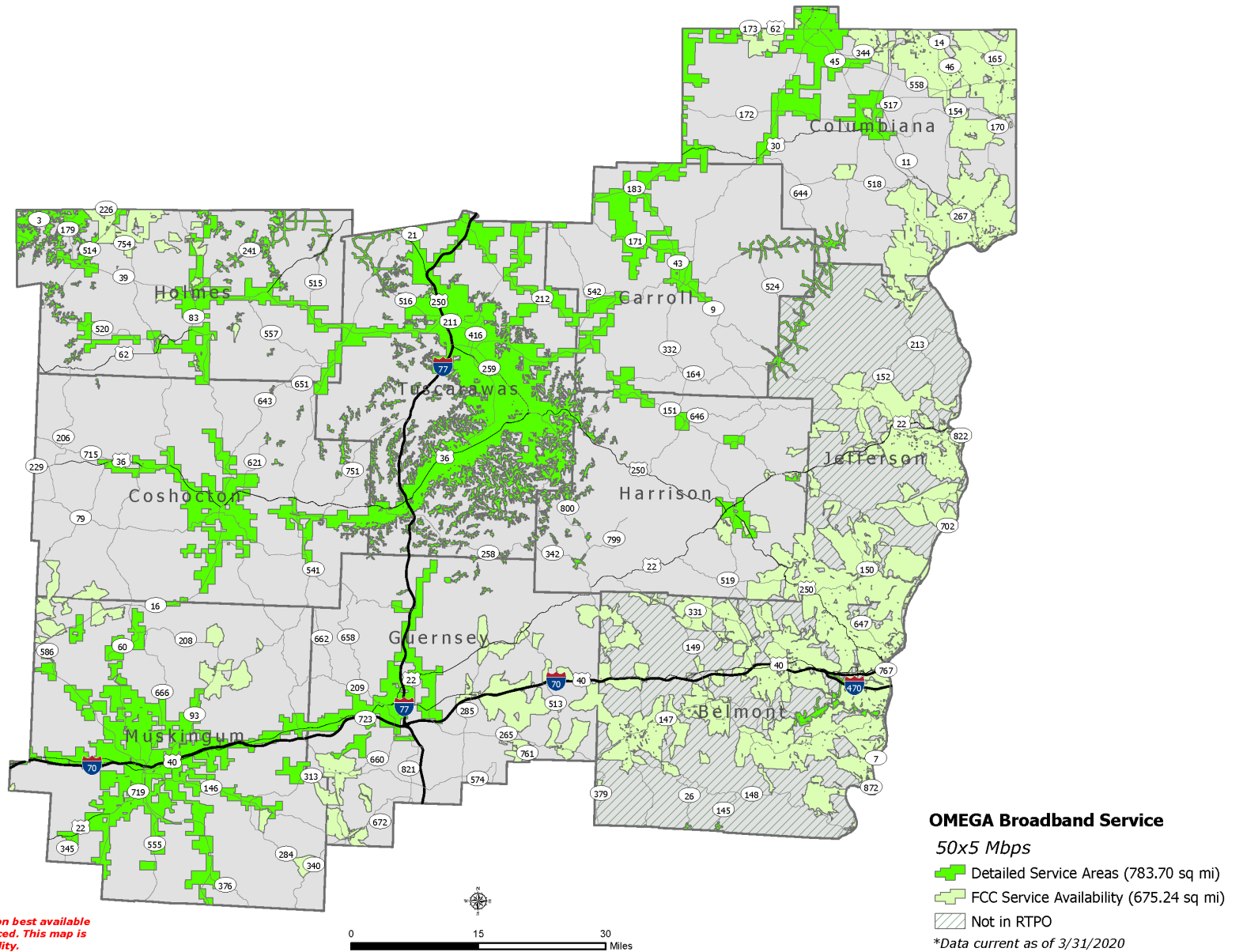
25x3 Mbps

- Detailed Service Areas (904.40 sq mi)
- FCC Service Availability (785.11 sq mi)
- Not in RTPO

**Data current as of 3/31/2020*

Figure B-2: Broadband Service Coverage – 25 x 3 Mbps

Figure B-2 shows broadband service coverage for the OMEGA region with speeds of 25 Mbps (Megabits per second) download and 3 Mbps upload. Detailed Service Areas (granular) and FCC Service Availability (non-granular) are color-coded separately. This data is provided by Connected Nation, current as of March 31, 2020.



Disclaimer: Service availability is based upon best available data and may not reflect actual areas serviced. This map is not a guarantee of internet service availability.

Figure B-3: Broadband Service Coverage – 50 x 5 Mbps

Figure B-3 shows broadband service coverage for the OMEGA region with speeds of 50 Mbps (Megabits per second) download and 5 Mbps upload. Detailed Service Areas (granular) and FCC Service Availability (non-granular) are color-coded separately. This data is provided by Connected Nation, current as of March 31, 2020.

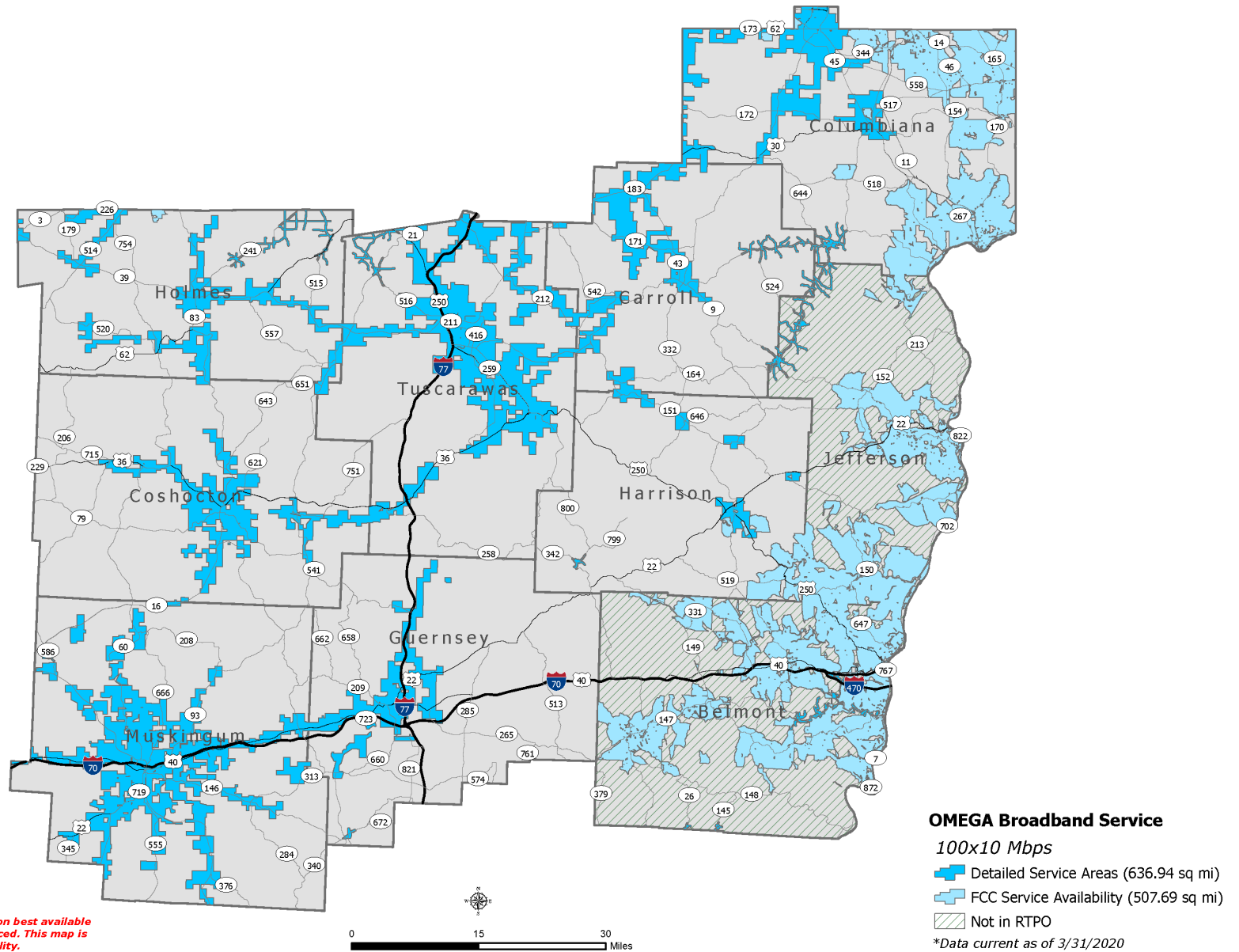


Figure B-4: Broadband Service Coverage – 100 x 10 Mbps

Figure B-4 shows broadband service coverage for the OMEGA region with speeds of 100 Mbps (Megabits per second) download and 10 Mbps upload. Detailed Service Areas (granular) and FCC Service Availability (non-granular) are color-coded separately. This data is provided by Connected Nation, current as of March 31, 2020.