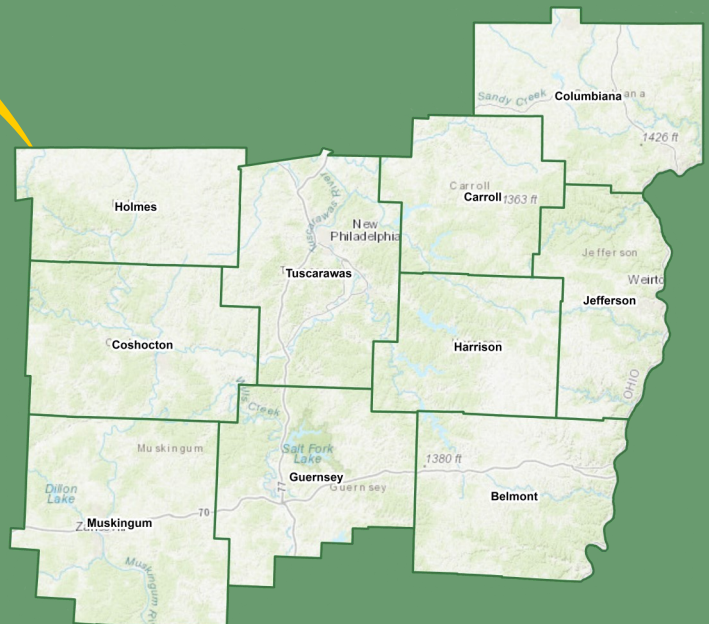


OMEGA REGIONAL COORDINATED PUBLIC TRANSIT/ HUMAN SERVICES TRANSPORTATION PLAN

2019-2022



In partnership with:



OMEGA REGIONAL COORDINATED PUBLIC TRANSIT/HUMAN SERVICES TRANSPORTATION PLAN

2019-2022



For more information about this plan, please contact:

Sean Sammon, Transit Planner

740-439-4471 ext. 212 or ssammon@omegadistrict.org

Funding for the development of this plan was provided by:





RESOLUTION NO. 2019-05

A RESOLUTION ACCEPTING AND APPROVING THE REGIONAL COORDINATED PUBLIC TRANSIT/HUMAN SERVICES TRANSPORTATION PLAN FOR BELMONT, CARROLL, COLUMBIANA, COSHOCTON, GUERNSEY, HARRISON, HOLMES, JEFFERSON, MUSKINGUM, AND TUSCARAWAS COUNTIES AND APPROVING SUBMISSION OF THE FINAL PLAN TO THE OHIO DEPARTMENT OF TRANSPORTATION (ODOT).

WHEREAS, the Ohio Mid-Eastern Governments Association in conjunction with the transportation service providers, mobility managers, human service agencies, seniors, individuals with disabilities, and members of the general public developed a regional coordinated plan, the implementation of which will increase ridership and provide for most cost effective transportation services throughout the region; and

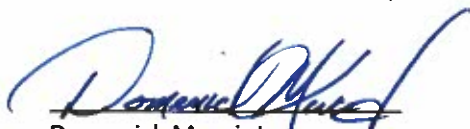
WHEREAS, regional coordination of public and private transportation systems and human service agencies will promote Enhanced Mobility for Seniors and Individuals with Disabilities as well as others who are in need of transportation services; and

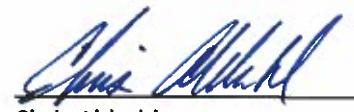
WHEREAS, the FTA Section 5310 Enhanced Mobility of Seniors and Individuals with Disabilities Program provides operating and capital assistance funding to provide transit and purchase of services to private nonprofit agencies, and to qualifying local public bodies that provide specialized transportation services to elderly persons and to people with disabilities; and

WHEREAS, the Regional Coordinated Council reviewed the Regional Coordinated Public Transit/Human Services Transportation Plan and recommended approval by OMEGA's Executive Board.

NOW, THEREFORE, BE IT RESOLVED THAT THE EXECUTIVE BOARD OF THE OHIO MID-EASTERN GOVERNMENTS ASSOCIATION APPROVES THE REGIONAL COORDINATED PUBLIC TRANSIT/HUMAN SERVICES TRANSPORTATION PLAN AND SUBMISSION OF THE FINAL PLAN TO THE ODOT.

DATE: December 10, 2019


Domenick Mucci, Jr.
President


Chris Abbuhl
Vice-President


Steve Mercer
Secretary


Ray Eyer
Treasurer

TABLE OF CONTENTS

Contents

Executive Summary	iv
I. Geographic Area	1
II. Population Demographics	18
III. Assessment of Available Services	37
Existing Transportation Services	40
Mobility Mangement Program	40
Inventory of Available Transportation Service Providers	59
Analysis of Regional Transportation Service Providers	65
Assessment of Community Support for Transit	65
Safety	67
Vehicles	68
Origin-Destination Study, Methodology & Analysis	71
IV. Assessment of Transportation Needs and Gaps	78
Regional Demographic and Socio-Economic Data	78
Analysis of Demographic Data	88
County Demographic Data Anaylsis	89
General Public and Stakeholder Meetings/Focus Groups	93
Surveys	94
Challenges to Coordinated Transportation	98
Summary of Unmet Mobility Needs in Region - Stakeholders	99
Summary of Unmet Mobility Needs in Region - Public	101
V. Goals and Strategies	107
Developing Strategies to Address Gaps and Needs	107
Regional Goal #1	107
Regional Goal #2	110
Regional Goal #3	112
Regional Goal #4	114
Regional Goal #5	116
Future Project Proposals & Implemented Strategies	118

<u>Transportation Service Provider Regional Projects</u>	118
<u>2019 Region 9: Transportation Service Provider Project Form Submittals</u>	119
<u>Regional Coordination Success Stories</u>	123
<u>VI. Plan Adoption</u>	136
<u>Appendix A: List of Planning Committee Participants</u>	139
<u>Agency Representation</u>	139
<u>Appendix B: List of Annual Reviews and Plan Amendments</u>	143
<u>Appendix C: Definitions</u>	145
<u>Appendix D: Data Definitions for Assessment of Available Services Tables</u>	148
<u>Appendix E: Transportation Service Provider Information Tables 1 - 13</u>	154
<u>Appendix F: 2017 Origin-Destination Maps by Agency</u>	234
<u>Appendix G: Origin-Destination Process</u>	266
<u>Appendix H: County Demographics References & Housing + Transportation Costs</u>	275
<u>Appendix I: Memorandum of Understanding</u>	277
<u>Appendix J: Human Service Agencies & Transportation Service Provider Maps</u>	282
<u>Appendix K: Success Stories from Coordinated Transportation</u>	286
<u>Appendix L: Transportation Service Provider Project Submittals</u>	342
<u>Appendix M: Survey Results – Graphics</u>	381
<u>Appendix N: Business Associates Agreement for CTS Software Portal</u>	391
<u>Appendix O: Regional Coordinated Plan – Public and Stakeholder Review Comments</u>	396
<u>Appendix P: Signed Regional Coordinated Plan Signature Pages & Memorandum of Understanding</u>	401

Page intentionally left blank.

Executive Summary

This regional coordinated plan is the Public Transit-Human Services Transportation Plan for the ten-county region of Ohio Mid-Eastern Governments Association (OMEGA). The ten counties included in this plan are Belmont, Carroll, Columbiana†, Coshocton, Guernsey, Harrison, Holmes, Jefferson, Muskingum, and Tuscarawas Counties. The plan was developed between 2018-2019. This plan fulfills the requirements of the Federal Transit Administration (FTA) under the Fixing America's Surface Transportation (FAST) Act, signed into law as a reauthorization of surface transportation programs through Fiscal Year 2020. According to requirements of the FAST Act, locally developed coordinated public transit-human services transportation plans must be updated to reflect the changes established by the FAST Act legislation. The FAST Act applies new programs and rules for all Fiscal Year 2016 funds and authorizes transit programs for five (5) years.

Transportation is a critical component of the communities in the OMEGA Region. Transportation provides access to jobs, education, health care, human services and allows all community members, including older adults and people with disabilities, to live independently and engage in community life. It is the purpose of this plan for local stakeholders to work collaboratively to do the following activities.

1. AVAILABLE REGIONAL RESOURCES FOR TRANSPORTATION

There are 71 transportation service providers or human service agencies that provide or contract transportation services within the OMEGA Region. The public served includes seniors, people with disabilities, zero-vehicles families, low income individuals, unemployed, veterans, Medicaid-eligible individuals, people with a low English proficiency, and others. These organizations by county include:

REGIONAL TRANSPORTATION SERVICE PROVIDERS LIST	
BELMONT COUNTY	• Barnesville Taxi Service
	• Belmont County Dept of Job & Family Services (BCDJFS)
	• Eastern Ohio Regional Transit Authority (EORTA)/ Ohio Valley Regional Transit Authority (OVRTA)
	• Martins Ferry EMS
	• National Church Residences
	• Neffs Fire Department
	• Senior Services of Belmont County (SSOBC)
CARROLL COUNTY	• Carroll County Board of Developmental Disabilities - Carroll Hills School (CCBDD)
	• Carroll County Board of Developmental Disabilities – Community Employment (CCBDD)
	• Carroll County Council on Aging
	• Carroll County Jobs & Family Services (Carroll Co JFS)
	• Carroll County Transit
COLUMBIANA COUNTY†	• Alpha Care
	• Calcutta Health Care Center
	• CARTS- Community Action Agency

COLUMBIANA COUNTY† (continued)	• Change, Inc
	• Checker Transportation
	• Columbiana County Educational Service Center
	• Columbiana County Veterans Service Commission
	• Covington Skilled Nursing
	• EDI
	• EMT (Emergency Medical Transport)
	• Head Start – Community Action Agency
	• KLG Mobile Intensive
	• Lifeteam EMS
	• North Star Critical Care
	• The Orchards of East Liverpool
	• Parkside Health Care
	• Paul’s Cab Company
	• Quaker Cab Company
	• Salem Health Care Centers (North & West)
	• Tri-State Cab Company
	• Vista Center
	• We Are Blessed Transportation
	• Wee The People
COSHOCTON COUNTY	• Coshocton County Coordinated Transportation Agency (CCCTA)
	• Coshocton Senior Center
	• Hopewell Industries, Inc.
	• Residential Home for the Developmentally Disabled (RHDD)
	• Veteran’s Service Commission
GUERNSEY COUNTY	• Countryview Assisted Living
	• Guernsey County Department of Job and Family Services
	• Guernsey County Senior Citizens Center
	• Guernsey County Veteran’s Services
	• South East Area Transit
	• Society for Equal Access
HARRISON COUNTY	• Harrison County Department of Jobs and Family Services (HCDJFS)
	• Harrison County Public Transit
	• Harrison County Veteran Services Commission
HOLMES COUNTY	• Holmes County Board of Developmental Disabilities (HCBDD)
	• Holmes County Council on Aging, Inc.
	• Holmes County Jobs & Family Services (HCJFS)
	• Holmes County Veterans Services
	• Lynn Hope Industries
	• Precious Angel Transportation

† = Columbiana County will have to refer to their county coordinated plan in order to apply for ODOT funding.

JEFFERSON COUNTY	• Checker Transportation/Ambulance Services, Inc.
	• PALS, Chrysalis Health
	• Prime Time Office on Aging
	• Steel Valley Regional Transit Authority
	• TranSmart USA
MUSKINGUM COUNTY	• Allwell Behavioral Health
	• Genesis HealthCare System
	• Muskingum County Board of Developmental Disabilities
	• Muskingum County Center for Seniors
	• Muskingum County Job & Family Services
	• Quality Care Partners
	• South East Area Transit
	• The Carr Center
	• Zanesville-Muskingum County Health Department
TUSCARAWAS COUNTY	• Community Mental Healthcare Inc
	• Horizons of Tuscarawas & Carroll Counties Inc
	• Society for Equal Access (SEA)
	• Tuscarawas County Job & Family Services
	• Tuscarawas County Senior Center

Mobility Managers in the region help connect the public to the transportation providers in a non-biased service and area a valuable resource for information and travel training.

LIST OF MOBILITY MANAGERS					
County	Name	Agency	Address	Phone	Email
Current Coverage (2019)					
Carroll, Guernsey, Harrison, Muskingum** Tuscarawas	Shannon Hursey	Senior Center of Tuscarawas County	425 Prospect St, Dover, OH 44622	330-364-6611	slhursey@yahoo.com
Columbiana†	Deb Hill	Community Action Agency of Columbiana County (CAAofCC)	7880 Lincolne Pl, Lisbon, OH 44432;	330-870-4345	Deb.Hill@caaofcc.org
Coshocton	Tracy Haines	Coshocton County Coordinated Transportation Agency (CCCTA)	401 Main Street, Coshocton, OH 43812	740-623-2564	tracyhaines@coshoctoncounty.net

† = Columbiana County will have to refer to their county coordinated plan in order to apply for ODOT funding.

County	Name	Agency	Address	Phone	Email
Future Addition Determination (2020)					
Belmont*	TBD	National Church Residences Transportation Services, LLC	485 North Street, Barnesville, Ohio 43713	740-619-0239	PHickenbottom@nationalchurchresidences.org
Muskingum County**	TBD	South East Area Transit (SEAT)	375 Fairbanks Street, Zanesville, Ohio 43701	740-454-8574	director@seatbus.org

*Belmont County has been selected by ODOT Office of Transit to begin Mobility Management services in 2020, a representative will be named at that time.

**Muskingum County is currently covered by Shannon Hursey until responsibilities are transferred to a representative from SEAT.

Specific information about each Transportation Service Provider is in **Section III** and **Appendix E** of this plan.

2. REGIONAL TRANSPORTATION CHALLENGES AND NEEDS

Several challenges to the regional coordinated transportation and unmet transportation needs have been identified by the Regional Coordinated Council as well as members of the public. These challenges and unmet transportation needs include:

CHALLENGES TO REGIONAL COORDINATED TRANSPORTATION

- Limited Funding
- Local Match
- Limited Resources/Technology
- Limited Broadband Service
- Insufficient Marketing
- Outreach to Public
- Incompatible Technology among Agencies
- Trip Duplications
- Transportation Service Provider Barriers/Limitations to Serve Public
- Trip Denials
- Eligibility Requirements
- Maintaining Qualified Drivers
- Sustainable Staff Size
 - Drivers
 - Schedulers
 - Dispatchers
- Trip Billing Across the Region
- No Set Fees for Out-of-Region Trips

- Transportation Across County Borders
- Each County Department of Jobs & Family Services Operate Independently
- Local Hospitals Closing
- Lack of consistent policies across all agencies, such as for no-shows or denials

UNMET REGIONAL TRANSPORTATION NEEDS

- More Weekend Service
- More Travel Service & Payment Options
- More Efficient Employment Transportation
- Expand Other Types of Transportation Service
- Improve & Increase Bus Service
- Expand Non-Medicaid Service Hours
- Offer Transfers & Improve City Connections
- Increase Medical Transportation Outside County & State
- Easy Fare/Rate for Low Income Individuals for Regional Mobility
- Simplify Public Information (i.e. brochures)
- Local Area Hospitals Closing Causing Longer Trips for Providers and Patients
- More Frequent Trips
- Evening Transportation Service
- Transportation to and from the Akron/Canton Airport
- Bus Stop Shelters
- Day & Seasonal Passes

3. REGIONAL COORDINATED PLAN FOR ACHIEVING SHARED GOALS

Five goals were established to guide the Regional Coordinated Transportation plan and to identify strategies that can be used to achieve the Coordinated Transportation Plan goals. These are the five goals developed by the Regional Coordinated Council followed by their associated strategies:

1. Increase Ridership for all Transportation Service Providers and Transit Agencies in the Region.

- 1.1. Extend service hours of transportation service providers and human service agencies to supplement necessary trips, maybe more on demand.*
- 1.2. Increase marketing and advertising of transportation services especially in conjunction with the Mid-Ohio Mobility Solutions.*
- 1.3. Coordinate affordable rates for the public that use transportation service in the region.*
- 1.4. Continue regional and local coordination of transportation service providers, human service agencies, and other participating stakeholders.*

2. More Efficient Out-of-County and Out-of-Region Transportation Service.

- 2.1. Cost-allocation, billing, and rates between transportation service providers and human service agencies.*
- 2.2. Utilize and implement a common scheduling technology to be used throughout the region.*

- 2.3. *Coordinate and continue regular quarterly meetings and conference calls/webinars for the Regional Coordinated Council, Regional Coordinated Planning Committee, and Regional Mobility Managers.*
- 2.4. *Meet with each county Department of Jobs & Family Services individually and as a group.*
- 2.5. *Produce and provide a Hot-Spot Analysis of major trips and destinations in and out of the region on an annual basis.*
- 2.6. *Establish a committee to develop Best Practices & Memorandums of Understanding (MOUs) for the Region.*
- 3. Reduce Denials and No-Shows of the Riders that Use Transportation Service in the Region.**
 - 3.1. *Utilize the Mid-Ohio Mobility Solutions as a tool for Transportation Service Providers and Human Service Agencies to coordinate regional trips.*
 - 3.2. *Coordinate regional trips using scheduling technology/software between the transportation providers.*
 - 3.3. *Communicate and coordinate with all Department of Jobs & Family Services in the region on local needs.*
 - 3.4. *Reduce one-person vehicle trips for all transportation providers in the region by coordinating rides.*
 - 3.5. *Share Transportation Service Provider Inventory or Scheduling Software with Medical Providers in order to schedule rides with medical appointments.*
 - 3.6. *Establish a satellite mobility solutions center for the eastern part of the region.*
- 4. Cost-Effective Vehicle Replacement for all Regional Transportation Service Providers.**
 - 4.1. *Document and log vehicle age, condition, mileage and any other important data relating to vehicle usage on an annual basis.*
 - 4.2. *Explore and create innovative funding options for all stakeholders involved with the regional plan.*
 - 4.3. *Develop a timeline for vehicle replacement in order for transportation providers to better serve the needs of their service area and the region.*
 - 4.4. *Establish minimum regional requirements for vehicles and drivers that serve the senior population and people with disabilities.*
- 5. Increase Employment Transportation Options for Jobseekers and Employees.**
 - 5.1. *Increase public education and awareness on the transportation options available for employees and job candidates.*
 - 5.2. *Partner with local and regional businesses to more efficiently track the need for employment transportation.*
 - 5.3. *Coordinate with job & career training centers in the counties in our region to provide reliable transportation for jobseekers.*
 - 5.4. *Establish car-share rides across age groups in the employment force.*
 - 5.5. *Coordinate vanpools/carpools with local coordination planning teams in each county.*
 - 5.6. *Allow sharing rides between counties.*
 - 5.7. *Establish a Public Transit Coalition for the region.*

Transportation service providers and mobility managers have identified 37 projects to meet these goals and strategies. More information on these projects can be found in **Section V** and **Appendix K**. Funding for operations, capital improvements and mobility management will be needed.

During the planning process, many stakeholders have begun their own implementation of regional coordination and have initiated their own pilot projects within this pilot regional coordinated transportation plan. These include:

- CTS Scheduling Software Collaboration
- Mid-Ohio Mobility Solutions/Regional Call Center
- Columbiana County Deviated Fixed Route Shuttle “Make the Connection”

There have been successful outcomes so far and these anecdotes have been recorded. These include:

- Commissioners Promote Public Transportation in Tuscarawas County
- Public Transit and Community Health – Muskingum County
- Cross County Transportation Service
- Regional Networking to Schedule Out-of-Region Trips
- Multi-Modal Transportation Out-of-Region Trip
- Cross County Mobility Service for Low Income Victim of Domestic Violence
- Transit Redesign to Accommodate Employment Opportunities
- Cross County Public Transit Agency Employment Transportation Coordination
- Out-of-Region & Out-of-State Transit Service
- Mid-Ohio Mobility Solutions: Four Initial Success Stories

Fundamental to the Coordinated Transportation Plan process is the active and meaningful involvement of stakeholders. For projects selected for funding under the Section 5310 program, participation in planning activities must include participation and/or representation of the following, at minimum:

- Seniors
- Individuals with disabilities
- People with low incomes
- Veterans
- Unemployed
- Job seekers
- People that do not own vehicles
- People with limited English proficiency
- Students in vocational schools, college, or universities
- Students with disabilities and transportation challenges
- Medicaid-eligible individuals
- Dialysis patients
- People that live in areas with limited or no transportation service available
- Public, private and non-profit transportation providers
- Human services agencies
- The general public.

In order to ensure participation from the above groups the following stakeholder involvement activities were performed

- Regional Coordinated Council – Inaugural Roundtable Discussion – April 6, 2018
- Regional Coordinated Council – 2017 Origin-Destination Data Deadline – June 30, 2018
- Regional Coordinated Council – 2nd Roundtable Discussion – September 26, 2018
- Regional Coordinated Council – Letters of Intent Due – October 19, 2018
- CTS Coordination Meeting – December 13, 2018
- Regional Coordinated Plan – Public Survey Open – January 2, 2019
- Regional Coordinated Council – 3rd Stakeholders Meeting – January 16, 2019
- Regional Mobility Management – Conference Call – February 1, 2019
- Regional Coordinated Council – February Conference Call – February 20, 2019
- Regional Mobility Management – Conference Call – March 1, 2019
- Regional Coordinated Council – March Conference Call – March 20, 2019
- Regional Mobility Management – Conference Call – April 5, 2019
- Regional Coordinated Council – 4th Stakeholders Meeting – April 17, 2019
- Regional Mobility Management – Conference Call – May 3, 2019
- Regional Coordinated Planning Committee – Initial Conference Call – May 6, 2019
- Regional Coordinated Council – Guernsey County Public Workshop – May 8, 2019
- Regional Coordinated Council – Jefferson County Public Workshop – May 13, 2019
- Regional Coordinated Council – May Conference Call – May 15, 2019
- Regional Coordinated Council – Tuscarawas County Public Workshop – May 16, 2019
- Regional Coordinated Council – Columbiana County Public Workshop – May 20, 2019
- Regional Coordinated Council – June Conference Call – June 6, 2019
- Regional Mobility Management – Conference Call – June 14, 2019
- Regional Coordinated Council – Muskingum County Public Workshop – June 10, 2019
- Regional Coordinated Council – July Conference Call – July 24, 2019
- Regional Coordinated Plan – Public Survey Closes – July 31, 2019
- Regional Mobility Management – Conference Call – August 2, 2019
- Regional Coordinated Planning Committee – Conference Call – August 5, 2019
- Regional Coordinated Council – Transportation Service Provider Information Tables Due – August 21, 2019
- Regional Coordinated Council – 5th Stakeholders Meeting – August 24, 2019
- Regional Coordinated Council – 5310/5311 Project Forms Due – August 30, 2019
- Regional Coordinated Council – 2018 Origin-Destination Data Deadline – August 30, 2019
- Regional Coordinated Council – September Conference Call – September 18, 2019
- Regional Coordinated Plan – Draft Plan Due to ODOT & RCC – September 30, 2019
- Regional Coordinated Plan – Draft Plan Due to Public – October 15, 2019
- Regional Coordinated Council – October Conference Call – October 17, 2019
- Regional Coordinated Council – Draft Plan Comments Due – November 1, 2019
- Regional Coordinated Council – 6th Stakeholders Meeting – November 22, 2019
- Regional Coordinated Plan – Public Comments Due – November 30, 2019
- Regional Coordinated Plan – Executive Board Adoption – December 10, 2019

- Regional Coordinated Plan – Final Plan Due – December 31, 2019
- Regional Coordinated Council – Plan Implementation Begins – January 2020

The regional coordinated transportation plan was developed and motioned for adoption by the Regional Coordinated Council on November 22, 2019. The regional coordinated transportation plan was adopted by the OMEGA Executive Board on December 10, 2019. More information about the Regional Coordinated Council can be found in **Appendix A**.

I. Geographic Area

The Ohio Mid-Eastern Governments Association (OMEGA) is organized as a Council of Governments pursuant to Section 167 of the Ohio Revised Code and is designated by the Appalachian Regional Commission as a Local Development District and by the US Department of Commerce, Economic Development Administration, as an Economic Development District. As shown in **Map 1-1**, OMEGA's region includes ten counties in eastern Appalachian Ohio: Belmont, Carroll, Columbiana, Coshocton, Guernsey, Harrison, Holmes, Jefferson, Muskingum, and Tuscarawas. OMEGA is a collaborative body of member governments that serves as a facilitator between state and federal government agencies and local entities to provide opportunities in economic and community development through networking, education, planning, research, and allocation of resources. OMEGA's mission is to provide a pathway to enhance community and economic growth in the region.

On January 27, 2016, the Governor of Ohio, pursuant to United States Code, Title 23, Section 135 (m), officially designated OMEGA as an Ohio Regional Transportation Planning Organization (RTPO). The OMEGA RTPO includes all counties previously listed except for Belmont and Jefferson Counties which are part of the Belomar and Brooke-Hancock-Jefferson metropolitan planning organizations, respectively. In January 2018, the Ohio Department of Transportation (ODOT) selected OMEGA to participate in a Regional Coordinated Transit/Human Services Transportation Pilot Program. The purpose of this pilot program is to promote cost-effective coordination of transportation services throughout the region and to increase mobility and ridership especially for seniors and disabled persons. All ten counties (see **Map 1-2**) within the OMEGA district are included in the pilot program.



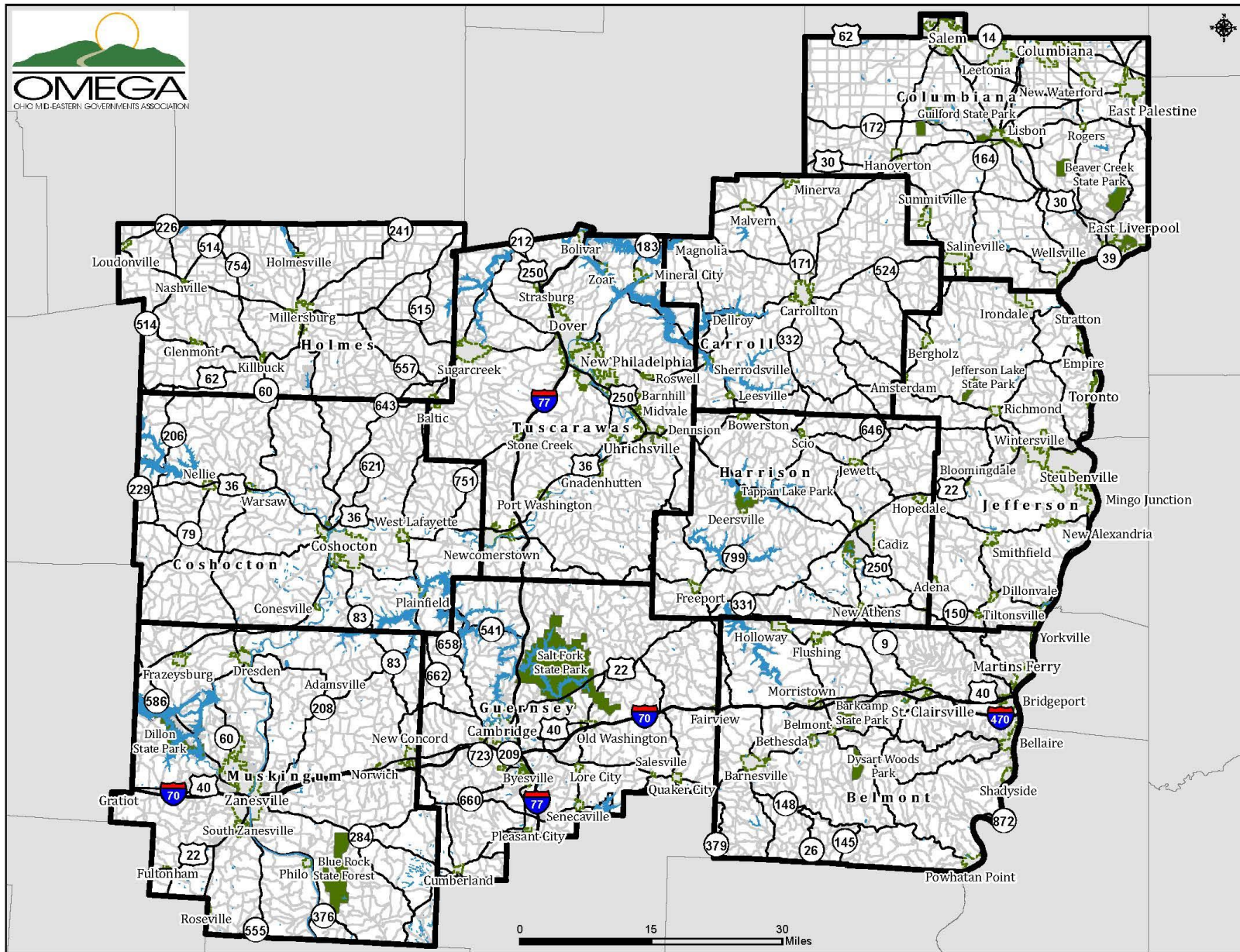
MAP 1-1: BASIC MAP OF THE STATE OF OHIO AND THE GEOGRAPHIC AREA OF THE OMEGA REGION

WHY ODOT CHOSE THE REGIONS

In recent years, ODOT began assessing regional coordination to solve a major problem; that there is currently no statewide coordinated planning coverage. Many of Ohio's 88 counties have some form of public transit and human service transportation, some have few or no services at all, and Specialized Transportation Program 5310 funding has limited funds making the application process more competitive. Transportation doesn't just occur within county lines, nor is it limited to just within a regional boundary. Considering all these reasons, regional coordination may be the best method to increase efficiency. In 2018, ODOT began a pilot project with two regions in opposite sides of the state and two very different characteristics to identify potential solutions.

The regions were selected based on trip patterns and other region boundaries for organizations such as the Department of Medicaid, Department of Health, and Area Agency on Aging (AAA). The two pilot regions include AAA Region 2 Miami Valley Regional Planning Commission (MVRPC) and AAA Region 9 Ohio Mid-Eastern Governments Association (OMEGA). AAA Region 9 was selected for the pilot project since it is primarily rural in landscape with complex transportation needs. In addition, most of the counties in this nine-county region did not have a current coordinated plan or none at all, which is a requirement to apply for 5310 funding. OMEGA was selected to lead AAA Region 9 because of their skilled planning experience, regional planning credentials and because they came highly recommended by the ODOT Statewide Planning Department.

The benefits that ODOT anticipates from regional coordination is to have more local control of Section 5310 funding, as well as the Mobility Management funds, to manage the award funding more efficiently and from a local perspective. By managing the award funding locally in a region, this will help increase efficiency for all the transportation service providers, community residents, and anyone who relies on transportation services. This regional effort can provide opportunities for funding that were not available before and establish local control to allow the most impact on the funds being well spent. More importantly, regional coordination should increase mobility and ridership especially for seniors and people with disabilities and be more cost-effective for transportation service providers.



MAP 1-2: BASIC MAP OF THE COUNTIES COVERED BY THE PLAN

Trip Generators for the OMEGA Region

There is a diverse mix of trip generators all throughout the region and most are based geographically and demographically. The most populous counties in the region, Belmont, Columbiana, Jefferson, Muskingum, and Tuscarawas all have each category of major trip generators medical, commercial, recreational, educational, human services, and industrial. Each of these counties has plenty of national, regional, and local types of commercial businesses for restaurants, groceries, hardware, auto-repair, and other commercial centers. Most of the counties in the region also have at least one mall or shopping center located within their county which helps centrally locate a mix of these business offerings. Most counties in the region also have options as where to go for medical services, since there is a hospital, medical facility, doctor office or they are located near a regional hospital. Most counties in the region have a healthy collection of recreational facilities either in parks, gyms, golf courses, country clubs, hiking trails, and wildlife areas. Most counties in the region have plenty of educational options consisting of local career centers and post-secondary options such as vocational schools, community colleges, and universities and state university satellite campuses, such as Ohio University and Kent State. Human services are also available to the residents of all ten counties as each has a council on aging, developmental disability board, job and family service, service for veterans, and other services tailored to the local area. Each of these counties also has plenty of industrial services that provide employment opportunities. In Belmont, Columbiana, Guernsey, Harrison, and Jefferson counties, the oil and gas industry is growing. It is also growing in Tuscarawas County, with the presence of Schlumberger Technologies and US Well Service Group, as well as the chemical industry. Also, in Columbiana County, there are more metal and material manufacturing, auto and machine industries, and other manufacturing facilities throughout.

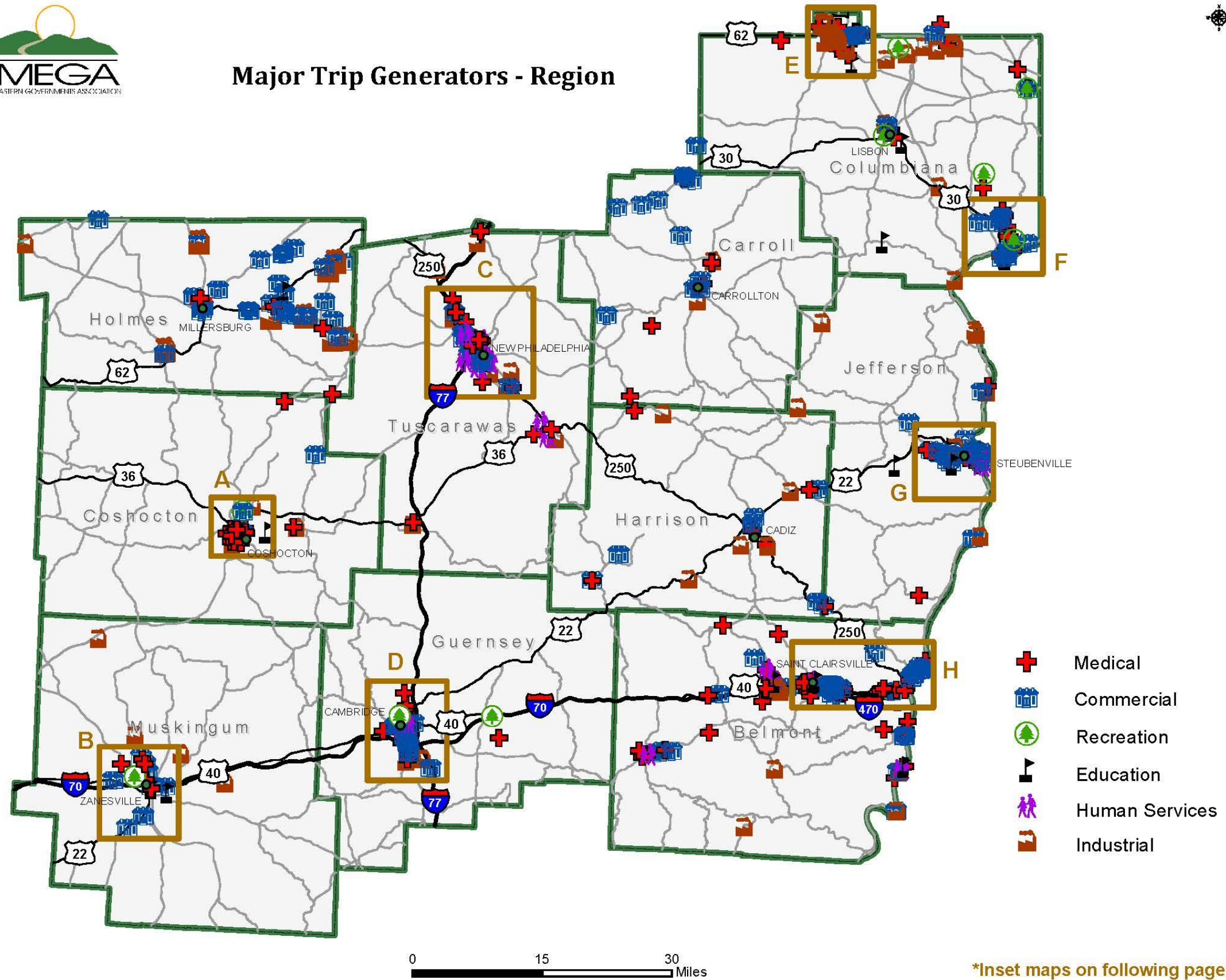
Some local and regional chains and services are naturally located in counties close to their headquarters or where they primarily serve. For instance, Tuscarawas and Columbiana in the north have plenty of companies that are based in Northeast Ohio, such as Cleveland Clinic, Giant Eagle, Buehler's, Sherwin Williams, and Goodwill Industries of Greater Cleveland. Jefferson and Belmont in the southeast have companies from southwest Pennsylvania or southeast Ohio such as Riesbeck's, United Dairy Inc., and Fraley and Schilling Inc. There are a few hospitals that serve the region's medical trips such as Genesis Hospital, Southeastern Ohio Regional Medical Center, Trinity Medical Center, Cleveland Clinic Union Hospital, but there are very limited primary care facilities. For these trips, many regional residents travel to either Cleveland, Canton, Columbus, Wheeling, or Pittsburgh.

The exception to the region is the least populous counties such as Harrison and Carroll counties. Each county has schools up through high school but there are limited options for higher education. Many students moving onto college or a technical school will have to go to another county if they want to stay in the region. There are a good number of chain businesses and industries, but it is challenging to hire candidates if you have youth leaving for school elsewhere. The human services are less comparatively since there is a lower population in these counties, however, the need is just as great.

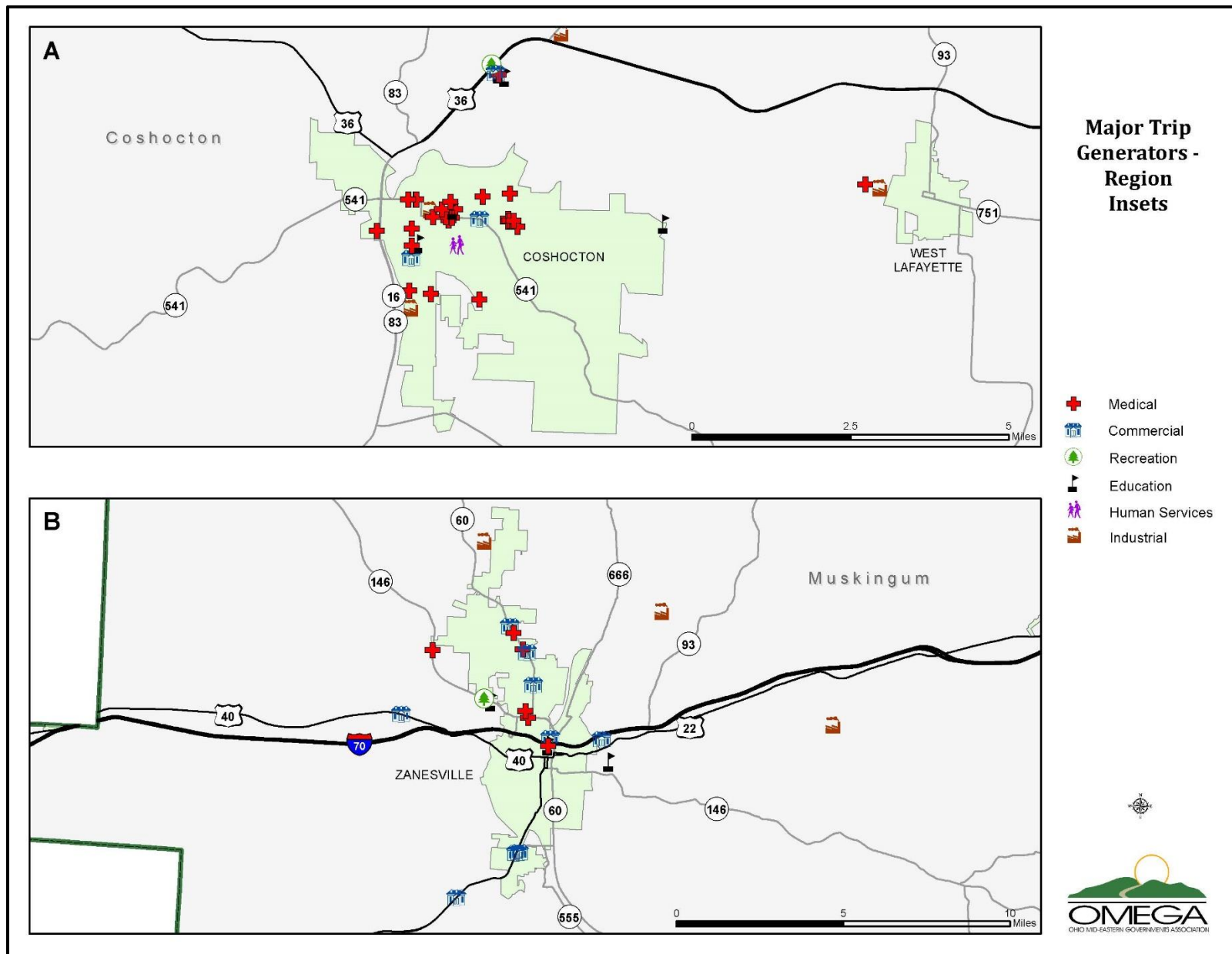
Holmes County has a strong mix of schools available as well as many private businesses which offer job opportunities to its residents. There is a small hospital in Millersburg, Pomerene Hospital, with a small staff to serve the county residents. The county is deficient on medical facilities and many residents go north to Wooster or Canton for specialized medical care. There are many industrial businesses which continue to strengthen their local county's economy. Holmes County leads the region for the lowest

unemployment rate (3.5%), lowest poverty rate for individuals (12.9%), households (9.1%), and the lowest disability rate (8.3%). Holmes does have the highest Limited English Proficiency (20.2%) in the region primarily because they have one of the largest Amish populations. More of this will be discussed in the demographic section.

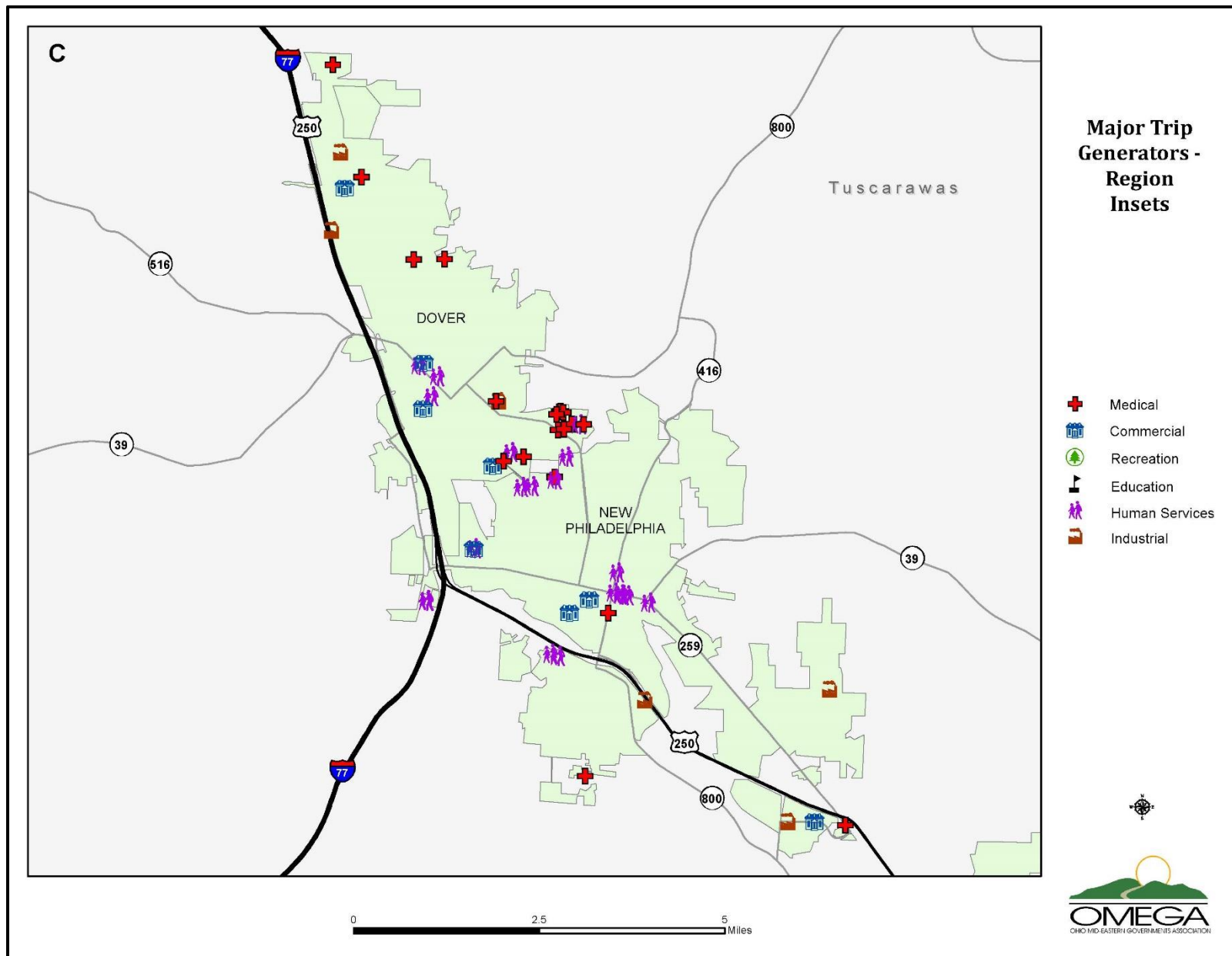
Major Trip Generators - Region



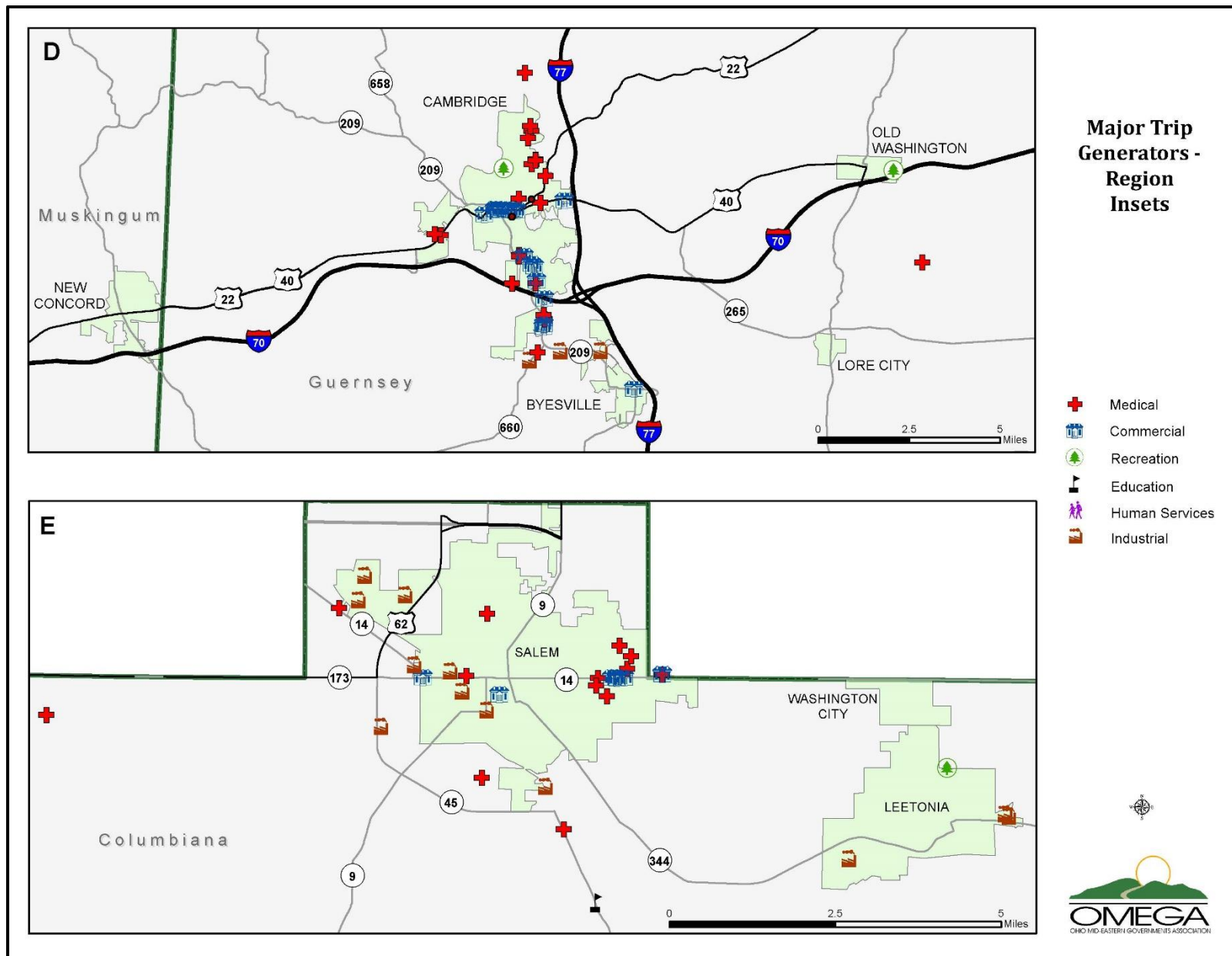
MAP 1-3A: OMEGA REGION MAJOR TRIP GENERATORS



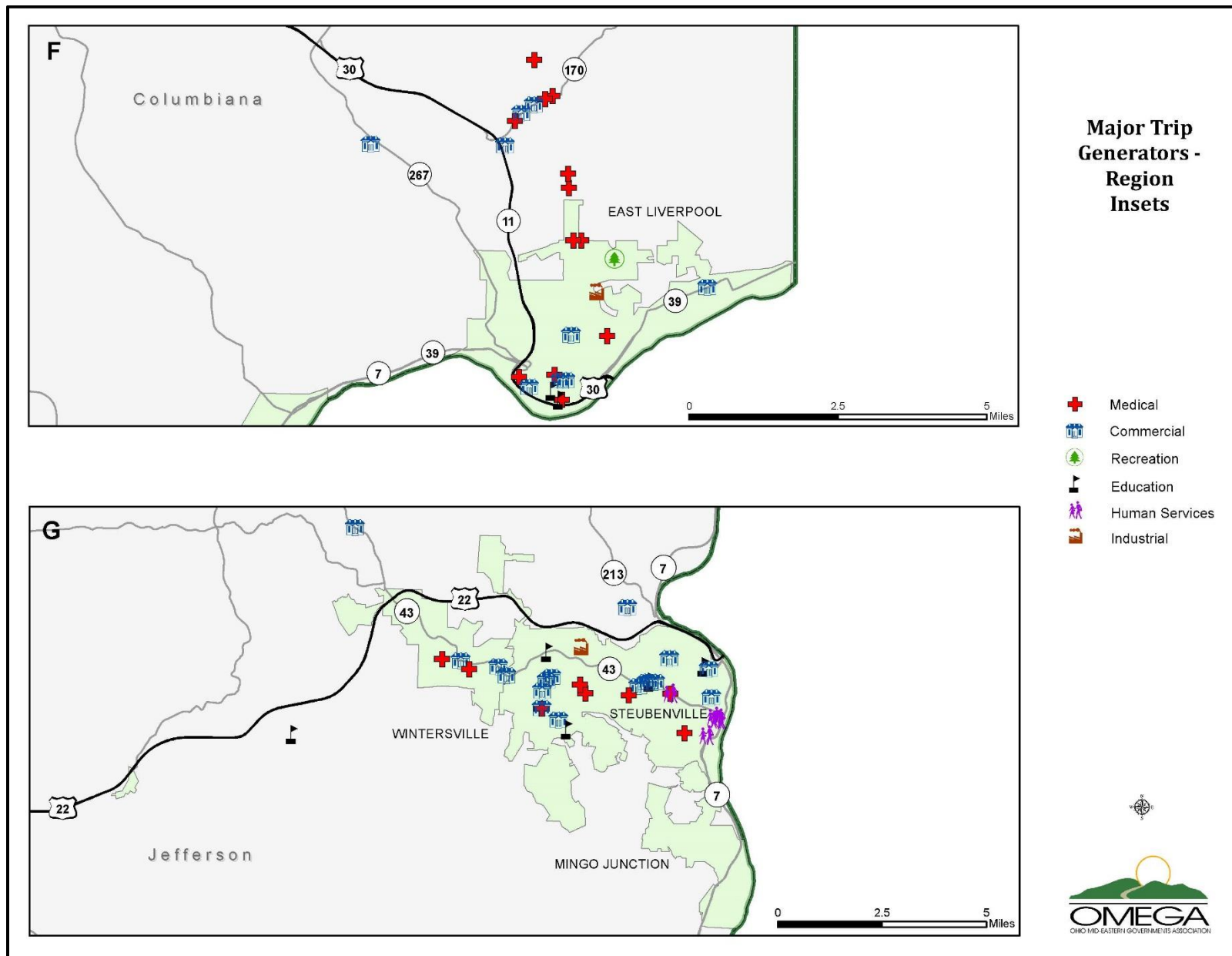
MAP 1-3B: OMEGA REGION MAJOR TRIP GENERATORS – INSET MAP LAYOUT COSHOCTON (A) AND ZANESVILLE (B)



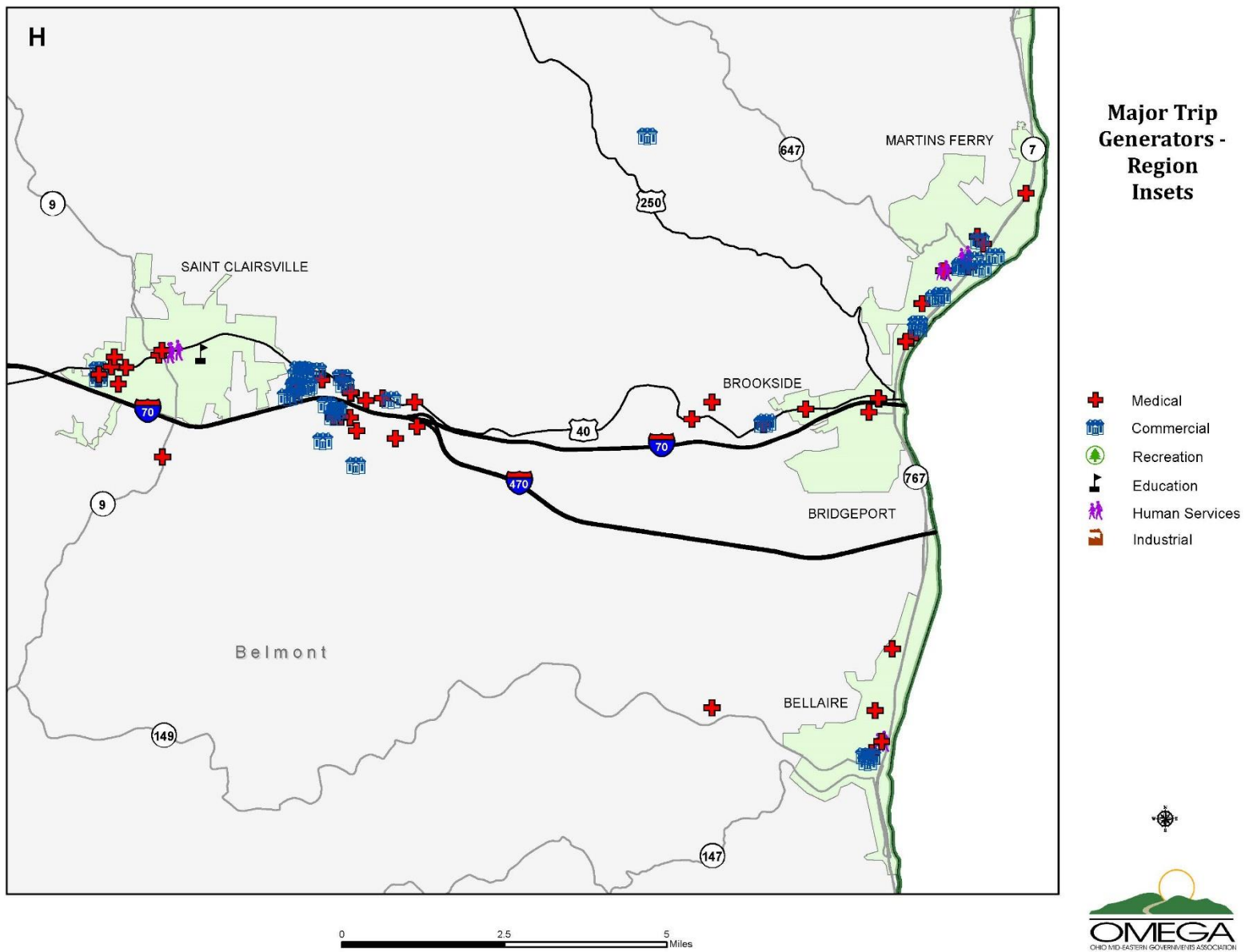
MAP 1-3C: OMEGA REGION MAJOR TRIP GENERATORS – INSET MAP LAYOUT DOVER & NEW PHILADELPHIA (C)



MAP 1-3D: OMEGA REGION MAJOR TRIP GENERATORS – INSET MAP LAYOUT CAMBRIDGE/BYESVILLE (D) & SALEM/LEETONIA (E)



MAP 1-3E: OMEGA REGION MAJOR TRIP GENERATORS – INSET MAP LAYOUT EAST LIVERPOOL (F) & STEUBENVILLE/WINTERSVILLE (G)



MAP 1-3E: OMEGA REGION MAJOR TRIP GENERATORS – INSET MAP LAYOUT EAST BELMONT COUNTY (H)

EXHIBIT 1-1: OMEGA REGION MAJOR TRIP GENERATORS INVENTORY TABLE

County	Medical	Commercial	Recreation	Education	Human Services	Industrial
Belmont	<ul style="list-style-type: none"> ➤ 70+ Healthcare Offices ➤ 911 Emergency Services ➤ Barnesville Community Hospital ➤ Belmont County Veteran Outpatient Clinic ➤ Belmont Medical Center ➤ Belmont Professional Associates ➤ Bridgeport Health Center ➤ Community Mental Health Services ➤ Davita Belmont Dialysis ➤ Ohio Hills Health Services ➤ Paramount Medical Care Inc ➤ Southeast Inc. ➤ St Clairsville Health Center ➤ Tri-County Help Center ➤ Trinity Health Systems Med 	<ul style="list-style-type: none"> ➤ Boscov's Department Store ➤ Bousquet & Associates ➤ Bright Futures ➤ Mansuetto Roofing ➤ Many chain restaurants\stores ➤ Mckeen Security Inc ➤ Ohio Valley Mall ➤ Planet Fitness ➤ Reisbecks ➤ Rural King Supply ➤ Sam's Club ➤ Southeast Inc. ➤ Staffilino Chevrolet Inc ➤ Times-Leader ➤ Unified Bank ➤ UPS Customer Center ➤ Walmart ➤ Whiteside Chevrolet Buick GMC 	<ul style="list-style-type: none"> ➤ Adventure Creek Challenge Course ➤ Barkcamp State Park ➤ Barnesville Reservoirs/Wildlife ➤ Belmont Hills Country Club ➤ Besthesda Farmers & Sportsman Club ➤ Bridgeport Fireman's Club ➤ Captina Creek Birding Trail ➤ City of Martin's Ferry Recreation Center ➤ Dysart Woods Park ➤ Epworth Park ➤ Horseshoe Bend Golf Course ➤ Park Center of Barnesville ➤ Powerline Park ➤ Rotary Lake Park ➤ Valley View Campground 	<ul style="list-style-type: none"> ➤ Ameridrive Driving School ➤ Belmont Career Center ➤ Belmont College ➤ Belmont-Harrison Voc School District ➤ Ohio University Eastern Campus ➤ Olney Friends School 	<ul style="list-style-type: none"> ➤ American Red Cross ➤ Belmont County Disaster Services ➤ Belmont County Health Department ➤ Belmont County Human Resources ➤ Belmont County Tourism Council ➤ Belmont County WIC Program ➤ Board of DD ➤ Department of Job and Family Services (BCDJFS) ➤ Easter Seals ➤ HEAP - Community Action Commission ➤ Ohio Means Jobs: Belmont County ➤ Senior Services of Belmont County ➤ Veterans Services 	<ul style="list-style-type: none"> ➤ American Electric Power Ohio ➤ American Energy Corp ➤ Avi Food Systems Inc ➤ Belco Works ➤ Belmont County Department of Development ➤ Columbia Gas of Ohio ➤ Commercial Vehicle Group ➤ Davison Electric ➤ Interstate Batteries of Steel Valley ➤ JW Stenger Trucking ➤ Lakeland Foods ➤ Marietta Coal CO ➤ Murray American Energy Inc ➤ Ohio Edison CO ➤ Ohio Valley Coal CO ➤ South Central Power ➤ Tricor Industrial ➤ United Dairy Inc
Carroll	<ul style="list-style-type: none"> ➤ 20+ Specialty Care ➤ Arbors of Minerva ➤ Belle's House-Assisted Living ➤ Bowerston Hills Health and Rehab Center ➤ Carroll Health Care Center ➤ Centreville Village ➤ Countryview Manor ➤ Golden Age Retreat ➤ The Bluffs 	<ul style="list-style-type: none"> ➤ Energy Transfer ➤ Fairmont Tools ➤ Normaco ➤ St John's Villa 	<ul style="list-style-type: none"> ➤ Atwood Lake ➤ Malvern Village Park 		<ul style="list-style-type: none"> ➤ Board of DD ➤ CCJFS ➤ Council on Aging ➤ Veteran Services 	<ul style="list-style-type: none"> ➤ AAM Metal Forming ➤ Carroll County Commerce Park ➤ Carrollton Industrial Park ➤ GBS ➤ Green Lines Transportation ➤ Imperial Aluminum ➤ Minerva Industrial Park ➤ Napa Distribution ➤ Normaco ➤ Summitville Tile-Minerva
Columbiana	<ul style="list-style-type: none"> ➤ 20+ Nursing Homes ➤ Blossom Nursing & Rehabilitation Center ➤ Circle Rehab ➤ Drayer Physical Therapy ➤ East Liverpool Hospital ➤ Human Motion Institute ➤ Infinity Physical Therapy ➤ NovaCare Rehabilitation ➤ Ohio Sports & Spine Institute ➤ Physical Therapy & Occupation Rehabilitation Inc ➤ Salem East Healthcare Center 	<ul style="list-style-type: none"> ➤ ALDI ➤ Busy Beaver ➤ Das Dutch Haus ➤ Eastgate Shopping Center ➤ Firestone Farms ➤ Giant Eagle Supermarket ➤ Hot Dog Shoppe ➤ Rayl's Market ➤ Rite Aid ➤ Salem Plaza ➤ The Home Depot ➤ Todd Sparkle Market ➤ Tractor Supply ➤ Village Plaza ➤ Walmart 	<ul style="list-style-type: none"> ➤ Beaver Creek State Park ➤ East Palestine City Park ➤ Guilford Lake State Park ➤ Leetonia Beehive Coke Ovens Park ➤ Salem Community Center ➤ Thompson Park ➤ Willow Grove Park ➤ YMCA ➤ YMCA Downtown 	<ul style="list-style-type: none"> ➤ Columbiana County Career and Technical Center ➤ Kent State University at East Liverpool ➤ Kent State University at Salem ➤ New Castle School of Trades 	<ul style="list-style-type: none"> ➤ Board of DD ➤ CAAofCC ➤ CCDJFS ➤ Easter Seals ➤ Mental Health and Recovery ➤ Salvation Army ➤ United Way ➤ Veteran Services 	<ul style="list-style-type: none"> ➤ Agile Casting Solutions/Humtown Products ➤ Better Management Distribution Center ➤ Butech Bliss ➤ CMI Efco Inc ➤ Columbiana Industrial Park ➤ Crockery City Farms Industrial Park ➤ Dilco Industries Inc ➤ Fresh Mark Inc ➤ Hickey Metal Fabrication ➤ Leetonia World Trade Park ➤ Lisbon Industrial Park ➤ Lowry Supply Co

County	Medical	Commercial	Recreation	Education	Human Services	Industrial
Columbiana (Continued)	<ul style="list-style-type: none"> ➤ Salem Regional Medical Center ➤ Silverio Physical Therapy ➤ TuDor Physical Therapy Centers ➤ Turning Point Residential 			<ul style="list-style-type: none"> ➤ Ohio Valley College of Technology (OVCT) ➤ Utica Shale School 		<ul style="list-style-type: none"> ➤ Mitsubishi Heavy Industries of America Tire Machinery Division ➤ Reichard Industries LLC ➤ Riverview Florist Technical Park ➤ Salem Industrial Park ➤ ShawCo Engineering ➤ Sustainable Opportunity Development Center, Inc. ➤ Vari-Wall Tube Specialists, Inc. ➤ Wellsville Intermodal Facility ➤ Zorich Industries
Coshocton	<ul style="list-style-type: none"> ➤ 10+ Chiropractors, Behavioral Health, and Specialty care doctors ➤ 10+ Private Doctor Offices ➤ 311 Medical Building ➤ Allwell ➤ Belltone Private Doctor's Offices ➤ Coshocton Gentle Dentistry ➤ Coshocton Regional Medical Center ➤ Dean Orthodontics ➤ Emergency Medical Services ➤ Kidney Care ➤ Muskingum Valley Health Services 	<ul style="list-style-type: none"> ➤ Aldi's Grocery Store ➤ Auer Ace Hardware ➤ Classic Auto Supply ➤ Coshocton DMV ➤ Coshocton Lumber Company ➤ Free/Randles Medical Equipment ➤ Historic Roscoe Village ➤ Multiple Banks ➤ Multiple Beauty Salons ➤ Multiple chain businesses ➤ Multiple Insurance Companies ➤ Multiple Pharmacies ➤ Multiple Restaurants ➤ Multiple Tire Shops ➤ Pearl Valley Cheese ➤ Raven's Glenn Winery & Restaurant ➤ Rural King/ Tractor Supply ➤ Sprout Garden Center ➤ Unusual Junction ➤ Wal-Mart ➤ Warehouse Restaurant 	<ul style="list-style-type: none"> ➤ Bakersville Community Park ➤ Clary Gardens ➤ Coshocton County Fair Grounds ➤ Coshocton Lake Park ➤ Elks/American Legion ➤ Kid's America Inc ➤ Pomerene Fine Arts Center ➤ Schumaker Farms ➤ Shelby Theater ➤ Woodbury Wildlife Area 	<ul style="list-style-type: none"> ➤ Central Ohio Technical College ➤ Coshocton Campus ➤ Coshocton County Career Center 	<ul style="list-style-type: none"> ➤ CCCTA ➤ Center of Disability Services ➤ Coshocton County Health Dept. ➤ Coshocton County Veterans Services ➤ Coshocton Public Library ➤ Coshocton Senior Center ➤ Dept. of Job and Family Services ➤ Echoing Hills Residential and Camp ➤ Emergency Management Agency ➤ Fuse Network ➤ Goodwill ➤ Kno-Ho-Co Ashland ➤ Mid-West Community Services ➤ Multiple Care Centers ➤ Multiple Churches/ Tabernacle ➤ Multiple Day Care Facilities ➤ Multiple Low-Income Housing ➤ Red Cross ➤ RHDD ➤ Salvation Army 	<ul style="list-style-type: none"> ➤ AEP ➤ AK Steel-Coshocton Works ➤ Annin Flag Company ➤ Coshocton County Port Authority ➤ Coshocton Trucking ➤ Fastenal ➤ H&H Auto Body ➤ ITM ➤ Jones Metal Products ➤ Kraft Foods ➤ McWane Ductile Technologies ➤ MFM Building Products Corporation ➤ Natural Lime & Stone ➤ Organic Technologies ➤ Prime Coshocton Industrial Park ➤ Sancast Inc. ➤ Three Rivers Energy ➤ TMK Valley Propane ➤ West Lafayette Industrial Park ➤ William Albert Excavating
Guernsey	<ul style="list-style-type: none"> ➤ Altercare Cambridge ➤ Autumn Healthcare of Cambridge ➤ Cambridge Family Eye Care ➤ Cambridge Regional Cancer Center ➤ Community Health Link ➤ Dr. Antellis Dental ➤ Dr. Antellis eye dr. ➤ Dr. Perry ➤ Fall Chiropractic ➤ First Settlement Physical Therapy 	<ul style="list-style-type: none"> ➤ Aldi ➤ Big Lots ➤ Cash Savers Grocery ➤ CVS Pharmacy ➤ Dollar General ➤ Dollar Tree ➤ Family Dollar – Byesville ➤ Garrett's Studio Hair Styling ➤ Good Will ➤ Hair Hunters ➤ Hats Off ➤ Images ➤ Judy's BarberShop 	<ul style="list-style-type: none"> ➤ Cambridge Area Performing Arts Center ➤ Cambridge Area YMCA ➤ Cambridge City Park ➤ Cambridge Country Club ➤ Pritchard Laughlin Civic Center ➤ Salt Fork State Park ➤ Scottish Rite Auditorium 	<ul style="list-style-type: none"> ➤ Mid-East Career Center ➤ Zane State College – Willet-Pratt Training Center 	<ul style="list-style-type: none"> ➤ Allwell ➤ Area Agency on Aging Region 9 ➤ Board of DD ➤ BMV ➤ Cedar Ridge ➤ Community Development Corp. ➤ Countryview Assisted Living ➤ Crossroads Library ➤ GCDJFS ➤ Guernsey County Administrative Offices ➤ Guernsey County Library ➤ People to People ➤ SEAT 	<ul style="list-style-type: none"> ➤ AMG Vanadium, Inc. ➤ Basic Systems Inc. ➤ Byesville Industrial Park ➤ Carter Lumber ➤ Colgate Palmolive Co ➤ D.O. Hall Business Center ➤ Encore Plastics Corporation ➤ I 70/ I 77 Industrial Park ➤ Laguna Clay ➤ LMI Custom Mixing LLC ➤ Petta Enterprises, LLC ➤ Picoma Industries ➤ Superior Steel Co

County	Medical	Commercial	Recreation	Education	Human Services	Industrial
Guernsey (Continued)	<ul style="list-style-type: none"> ➤ Gardentsky Dental ➤ Genesis Health Care ➤ Jefferies Chiropractic ➤ Kidney Care Centers of Cambridge (Dialysis Center) ➤ Luminous Eyecare ➤ Medical Associates ➤ Muskingum Valley Health Center ➤ South Eastern Ohio Orthopedics ➤ Southeastern Med ➤ Southeastern Ohio Orthopedics ➤ Superior Med ➤ The eye site ➤ VA Clinic ➤ Woodlawn Dental ➤ WorkPro/Rehab 	<ul style="list-style-type: none"> ➤ Mel's Curl Shop ➤ Mosser Glass ➤ Peoples Bank ➤ PNC Bank ➤ Post Office ➤ Riesbecks & Pharmacy ➤ Rite Aid Pharmacy ➤ Ruby Tuesday ➤ Staci's Hair Salon ➤ The Forum ➤ Theo's Restaurant ➤ Walmart & Walmart Pharmacy ➤ Wycoff's Barbershop 			<ul style="list-style-type: none"> ➤ Social Security Office ➤ Society of Equal Access ➤ Veteran's Services Senior Citizens Center 	<ul style="list-style-type: none"> ➤ Telling Industries ➤ Velocity Group
Harrison	<ul style="list-style-type: none"> ➤ Carriage Inn of Cadiz ➤ Gables Care Center ➤ Harrison Community Hospital ➤ Harrison County Home ➤ Sunnyslope Care Center ➤ Sunnyslope Skilled Nurse-Rehab 	<ul style="list-style-type: none"> ➤ Cigna ➤ Harrison Industries Inc ➤ Lkq Auto Parts ➤ Mc Donald's ➤ Taco Bell ➤ Wendy's 	<ul style="list-style-type: none"> ➤ Cadiz Country Club ➤ Clendening Lake ➤ Harrison State Forest ➤ Piedmont Lake ➤ Sally Buffalo Park ➤ Tappan Lake Park 	<ul style="list-style-type: none"> ➤ Belmont-Harrison Vocational School District 	<ul style="list-style-type: none"> ➤ Belmont-Harrison Career Center ➤ Board of DD ➤ County Home ➤ HCDJFS ➤ Veteran Services 	<ul style="list-style-type: none"> ➤ Cravat Coal CO ➤ Freeport Press ➤ Harrison County Industrial Park ➤ L J Smith Stair Systems ➤ Markwest Energy ➤ Ohio CAT ➤ Pizzino Hopedale Complex ➤ Utica East Ohio Gathering, LLC
Holmes	<ul style="list-style-type: none"> ➤ Joel Pomerene Memorial Hospital ➤ Millersburg Medical Center ➤ New Bedford Care Center 	<ul style="list-style-type: none"> ➤ Berlin Gardens, LLC ➤ Dometic Corp - Sanitation Division ➤ Fryburg Door, Inc. ➤ Guggisberg Cheese, Inc. ➤ Hiland Wood Products, Inc. ➤ Holmes Lumber & Building Center ➤ Keim Lumber ➤ Mullet Cabinet ➤ Rodhe's IGA ➤ Schrock's of Walnut Creek ➤ Tourism Berlin ➤ Tourism Charm ➤ Tourism Mt. Hope ➤ Troyer Cheese ➤ Valley View Oak, LLC ➤ Walmart ➤ Walnut Creek Foods, Inc. ➤ Weaver Leather, LLC 	<ul style="list-style-type: none"> ➤ Black Diamond Golf Course ➤ Crissey Memorial Swimming Pool ➤ Fire Ridge Golf Course ➤ Holmes County Trail ➤ Holmes Fair Grounds ➤ Killbuck Marsh Wildlife Area ➤ Lake Buckhorn (Boating & Fishing) ➤ Lower Killbuck Creek Wildlife Area ➤ Mohican Recreational Area 	<ul style="list-style-type: none"> ➤ Holmes County College Access ➤ The Ohio State University – Holmes County Extension 	<ul style="list-style-type: none"> ➤ Board of DD (HCBDD) ➤ Council on Aging, Inc. ➤ HCJFS ➤ Holmes County Training Center ➤ Knohoco Community Action ➤ Lynn Hope Industries ➤ Veteran Services 	<ul style="list-style-type: none"> ➤ Action Coupling & Equipment ➤ Case Farms ➤ Centor Gerresheimer ➤ Holmes Redimix ➤ International Automotive Components Group ➤ Kent Elastomer Products, inc. ➤ Killbuck Industrial Park ➤ Loudonville Industrial Park ➤ ProVia Door ➤ ProVia Stone ➤ Robin Industries, Inc., Holmco Div. ➤ Sperry & Rice Manufacturing Co., LLC ➤ Wayne Dalton ➤ Yoder Lumber Co., Inc.

County	Medical	Commercial	Recreation	Education	Human Services	Industrial
Jefferson	<ul style="list-style-type: none"> ➤ Ambulance Service of Steubenville ➤ Carriage Inn of Steubenville ➤ Express Care ➤ Heritage Home Care ➤ Lancia Villa Royale ➤ Laurels of Steubenville ➤ Sienna Woods Nursing & Rehab ➤ Sunset Health Care ➤ Trinity Medical Center West/East ➤ Valley Hospice 	<ul style="list-style-type: none"> ➤ Applebees Neighborhood Grill ➤ Biggio Ford Lincoln Mercury ➤ Bob Evans ➤ First Data Payment Services ➤ Fort Steuben Mall ➤ Fraley & Schilling ➤ G&G Agency ➤ Harbor Freight ➤ Herald Star ➤ Kroger Co ➤ Labelle News Agency ➤ LKQ 250 Auto ➤ Lowes Home Centers, Inc ➤ Planet Fitness ➤ Riesbeck's Food Markets ➤ Rural King ➤ SUMO ➤ Texas Road House ➤ TJ Maxx ➤ Walmart ➤ WTOV 	<ul style="list-style-type: none"> ➤ Beatty Park ➤ Bellevue Municipal Park ➤ Brush Creek Wilderness Area ➤ Fernwood State Forest ➤ Friendship Park ➤ Jefferson State Park Division ➤ New Alexandria Park ➤ Steubenville Country Club 	<ul style="list-style-type: none"> ➤ Eastern Gateway Community College ➤ Franciscan University of Steubenville ➤ Jefferson Community College ➤ Jefferson County Educational Service Center (ESC) ➤ Jefferson County Joint Vocational School ➤ Ohio Mid-Eastern Regional Education Service Agency (OME-RESA) 	<ul style="list-style-type: none"> ➤ Board of DD ➤ Jeffco Services, Inc. ➤ Jefferson County Community Action Council, Inc. ➤ Prime Time Office on Aging ➤ Veterans Service Commission 	<ul style="list-style-type: none"> ➤ AEP Generation Resource ➤ Apex Environmental ➤ Bechtel Construction Co ➤ Bill De Noon Lumber Co ➤ Cardinal Operation Co ➤ FirstEnergy Generation Corp ➤ JSW ➤ Ohio Power Co ➤ Titanium Metals Corp
Muskingum	<ul style="list-style-type: none"> ➤ Adams Lane Care Center ➤ Allwell Behavioral Health Services ➤ Altercare of Zanesville ➤ Beckett House At New Concord ➤ Brookdale- Zanesville ➤ Coler Hospice Ltd ➤ DaVita Zanesville Dialysis ➤ Genesis Cancer Care ➤ Genesis Hematology & Cancer Center ➤ Genesis Hospital ➤ Good Samaritan Medical-Rehab ➤ Kidney Care Center ➤ Muskingum Behavioral Health ➤ Muskingum Counseling Center ➤ Muskingum Valley Health ➤ Muskingum Valley Health/ Pinkerton Lane ➤ Prime Care 	<ul style="list-style-type: none"> ➤ Applebee's ➤ Bob Evans Restaurant ➤ Buffalo Wild Wings Grill & Bar ➤ Century National Bank ➤ Colony Square Mall ➤ Community Bank ➤ Cracker Barrel Old Country Str ➤ Dutro Ford Lincoln Inc ➤ Golden Corral Buffet & Grill ➤ Home Depot ➤ Huntington Bank ➤ Kohl's ➤ Kroger ➤ Longhorn Steakhouse ➤ Lowe's Home Improvement ➤ Mc Donald's ➤ North Valley Bank ➤ Red Lobster ➤ Riesbecks - South and Downtown ➤ Sam's Club ➤ Tee Jaye's Country Place ➤ Tumbleweed Tex-Mex Grill 	<ul style="list-style-type: none"> ➤ Blue Rock Forest ➤ Dillon Lake & Wildlife Area ➤ Dresden River Park ➤ Eaglesticks Golf Club ➤ Fieldhouse Fitness ➤ Lake Isabella ➤ Monroe Basin Wildlife Area ➤ Muskingum County Fair Grounds ➤ Muskingum Recreation Center ➤ Muskingum Recreational Trail ➤ Powelson Wildlife Area ➤ Secrest Auditorium ➤ Sunrise Strikes ➤ Tri-Valley Wolford Park ➤ Vista Golf Course ➤ Wilds ➤ Zanesville Country Club ➤ Zanesville Riverside Park 	<ul style="list-style-type: none"> ➤ Adult Center for Education ➤ Mid-East Career & Tech Center ➤ Muskingum University ➤ Ohio University Zanesville ➤ Zane State College 	<ul style="list-style-type: none"> ➤ Air National Guard ➤ Board of DD – Starlight ➤ Center for Seniors ➤ Christ Table ➤ Dresden Volunteer Fire Department ➤ Falls Twp Fire Dept ➤ Health Department ➤ MCJFS ➤ Muskingum County Children Services ➤ Muskingum County Court House ➤ Muskingum County Library ➤ Muskingum Juvenile Court ➤ Quality Care Partners ➤ Social Security Office ➤ The Carr Center ➤ United Way ➤ Veterans Services ➤ Zanesville City Hall ➤ Zanesville Civic League 	<ul style="list-style-type: none"> ➤ SB's Sewing ➤ Advantage Tank Lines ➤ Airport Park ➤ Alaska Steel Corp ➤ Autozone Distribution Center ➤ Axion International Holdings ➤ Ballas Egg Products Corp ➤ Bilco Company ➤ Cardinal Health ➤ Dollar General Dstrbtn Center ➤ Eastpointe Business Park ➤ Fantatics ➤ Goodwill Industries, Inc ➤ Goss Supply CO ➤ Jordan Services LLC ➤ Kellogg CO ➤ Lepi Enterprises Inc ➤ Lumi-Lite Candle CO Inc ➤ Neff Machinery & Supply Inc ➤ Nestle Purina Pet Care CO ➤ Northpointe Business Park ➤ Ohio Textile ➤ Orthopedic Associates

County	Medical	Commercial	Recreation	Education	Human Services	Industrial
Muskingum (Continued)	<ul style="list-style-type: none"> ➤ SEO Heart Lung & Vascular Center ➤ Six County Inc ➤ Willow Haven Care ➤ Zandex Health Care ➤ Zanesville Cardiology 	<ul style="list-style-type: none"> ➤ UPS Customer Center ➤ Walmart Supercenter ➤ Wendy's ➤ Zanesville Times Recorder 			<ul style="list-style-type: none"> ➤ Zanesville Municipal Court ➤ Zanesville-Muskingum Health Department ➤ ZMHA 	<ul style="list-style-type: none"> ➤ Penda Form Corp ➤ Pepsi Bottling Group ➤ Plaskolite ➤ Producers Service Corp
Tuscarawas	<ul style="list-style-type: none"> ➤ Amberwood Manor ➤ Claymont Health and Rehabilitation ➤ Cleveland Clinic Union Hospital ➤ Community Mental Healthcare Inc. ➤ Davita Dialysis ➤ Fresenius Dialysis Services ➤ Hennis Care Centre ➤ Louis Stokes VA Multi-Specialty Outpatient Clinic ➤ Oak Pointe Nursing Home ➤ Park Village Health Care Center ➤ Park Village Southside ➤ Schoenbrunn Healthcare ➤ Trinity Twin City Hospital 	<ul style="list-style-type: none"> ➤ BellStores ➤ Blazin Burgers ➤ Bob Evans ➤ Breitenbach Wine Cellars ➤ Buehler's Fresh Foods ➤ Canal Street Diner ➤ Dairy Queen ➤ Giant Eagle Supermarket ➤ Goodwill Industries of Greater Cleveland & East Central Ohio ➤ Lee's Famous Recipe Chicken ➤ Lockport Brewery ➤ Lowes Home Improvement ➤ Menards ➤ New Towne Mall ➤ PNC Bank ➤ Rite Aid ➤ Sherwin Williams ➤ Shoney's Dover ➤ Swiss Village Bulk Foods ➤ Wallhouse Coffee Co ➤ Wal-Mart Stores ➤ Zimmer Orthopedic 	<ul style="list-style-type: none"> ➤ Adkins Raceway ➤ Beach City Wildlife Area ➤ Big Bend Golf Course ➤ Bullseye Pheasant Preserve ➤ Dundee Falls ➤ McCluskey Park ➤ Midvale Speedway ➤ New Philadelphia Canoe Rentals ➤ Oak Shadows Golf Club ➤ Schoenbrunn Village ➤ Southside Community Park ➤ Thornwood Park ➤ Tuscora Park ➤ Uhrichsville Water Park ➤ Union Country Club ➤ Wilkshire Golf Course ➤ Zoar Village Golf Course 	<ul style="list-style-type: none"> ➤ Buckeye Career Center ➤ Kent State University at Tuscarawas 	<ul style="list-style-type: none"> ➤ Adult Development Services ➤ Avenues of Adventure ➤ Board of DD ➤ Consumer Support Services ➤ Dover Phila Food Bank Church of the Final Harvest ➤ Horizons of Tuscarawas & Carroll Counties Inc. ➤ Person Center Services Inc ➤ Society for Equal Access ➤ Starlight Enterprises Inc ➤ Stepping Stones Workshop ➤ TCJFS ➤ Tuscarawas County Health Department ➤ Tuscarawas County Senior Center ➤ Veterans Services 	<ul style="list-style-type: none"> ➤ Allied Machine & Engineering ➤ Cable Manufacturing and Assembly Co, Inc. ➤ Castings USA ➤ Cookson Industrial Park ➤ Cooper Standard ➤ Deeds Industrial Park ➤ Dennison Park ➤ Dover Chemical ➤ Dover Industrial Park ➤ Finishing Touch Flooring ➤ Freeport Press ➤ Galicks ➤ Gradall Industries ➤ Harris Battery ➤ Hicks Industrial Roofing ➤ Hilltop Properties Industrial Park ➤ Knisely New Philadelphia Industrial Park ➤ Lawrence Township Industrial Park ➤ Marlite Inc ➤ Marsh Industries, Inc ➤ Mondi Bags USA ➤ Mushrush Utility Contracting ➤ Newcomerstown Industrial Park ➤ North Star Metal Manufacturing ➤ Reeves Mill Industrial Park ➤ Regional Tech-Park ➤ Reymond Products International ➤ Rich Industries ➤ Schwartz Distributing ➤ Strasburg Industrial Park ➤ Suez Water Technologies & Solutions ➤ Superior Clay Corporation